

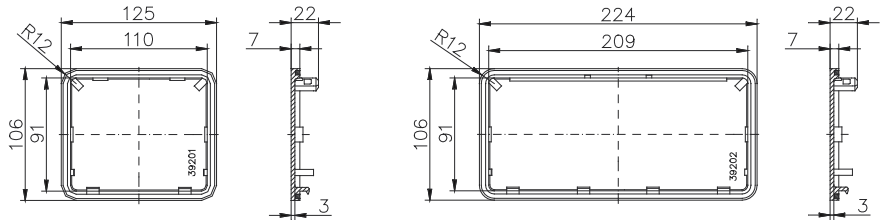
Polycarbonate Flange

Accessories



Blind flange

Order No.	Version
17.00 31 00	Blind flange I (125 x 106 mm)
17.00 32 00	Blind flange II (224 x 106 mm)



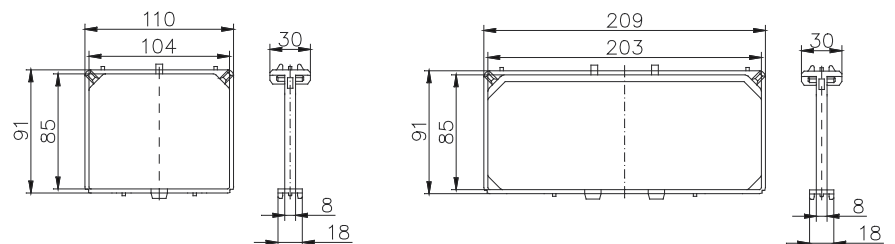
Threaded flange with pre-embossed holes

Order No.	Version
17.00 34 00	19 x PG 9 / PG 13,5
17.00 35 00	16 x PG 11 / PG 16
17.00 33 00	10 x PG 9 / PG 13,5; 4 x PG 11 / PG 16; 2 x PG 21 / PG 29



Connection flange to connect two polycarbonate flange enclosures

Order No.	Version
17.00 36 00	Connection flange I
17.00 37 00	Connection flange II

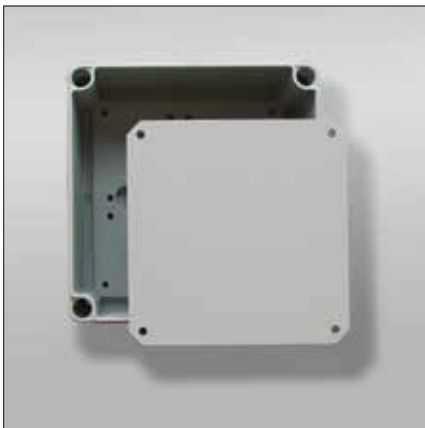
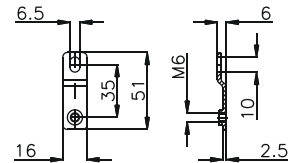
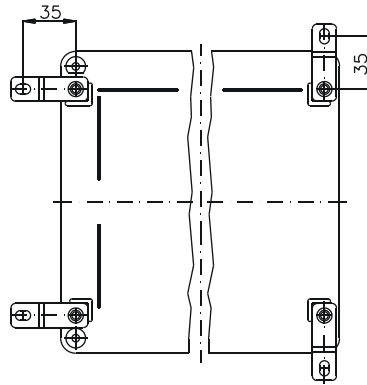


Accessories



External mounting brackets
set = 4 pcs.

Order No. **10.03 11 04**



Mounting plates
for fitting electro-mechanical components



Mounting bracket
set = 4 pcs.

Order No. **17.00 42 00**

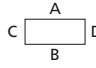
Type: **17.01 10 . .**

External dimensions: **170 x 134 x 130 mm**

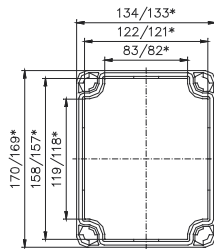
Weight: **793 g**

DIN rail length in mm	max. fitting length in mm	Mounting plate (thickness in mm)	External mounting brackets	Hinged lid	No. of flanges			
TS 35								
140	115	3	•	•	2			

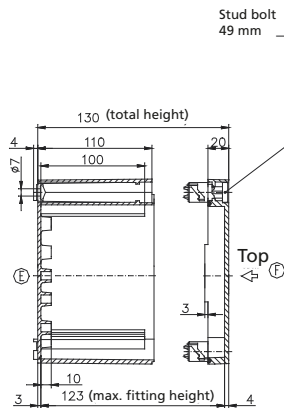
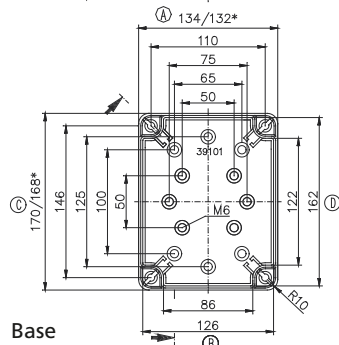
Maximum number of cable glands to DIN 50262*



Lid



* = Conical form tapering downwards
Free dimensions-tolerance to DIN 16901 - 130



M	Corner dim.	Side		PG	Corner dim.	Side	
		A/B	C/D			A/B	C/D
12	17,25	16	27	7	17,25	16	27
16	25,30	8	12	9	21,85	12	16
20	27,60	6	10	11	25,30	8	12
25	37,95	3	5	13,5	27,60	6	10
32	48,30	2	4	16	31,05	4	9
40	60,95	1	2	21	37,95	3	5
50	69,00	1	1	29	48,30	2	4
63	74,75			36	60,95	1	1
				42	69,00	1	1
				48	74,75		1

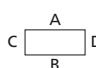
Type: **17.02 10 . .**

External dimensions: **170 x 170 x 130 mm**

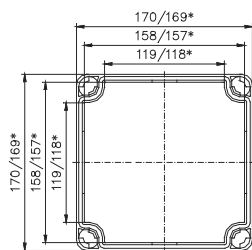
Weight: **904 g**

DIN rail length in mm	max. fitting length in mm	Mounting plate (thickness in mm)	External mounting brackets	Hinged lid	No. of flanges			
TS 35								
140	115	3	•	•	4			

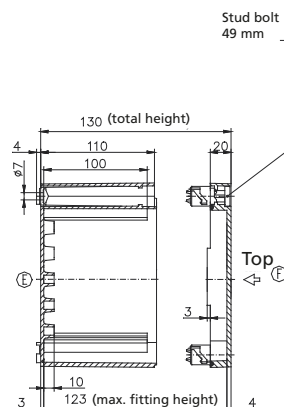
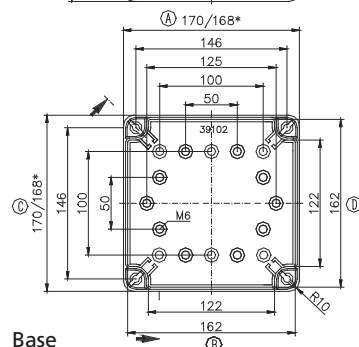
Maximum number of cable glands to DIN 50262*



Lid



* = Conical form tapering downwards
Free dimensions-tolerance to DIN 16901 - 130



M	Corner dim.	Side		PG	Corner dim.	Side	
		A/B	C/D			A/B	C/D
12	17,25	27	27	7	17,25	27	27
16	25,30	12	12	9	21,85	16	16
20	27,60	10	10	11	25,30	12	12
25	37,95	5	5	13,5	27,60	10	10
32	48,30	4	4	16	31,05	9	9
40	60,95	2	2	21	37,95	5	5
50	69,00	1	1	29	48,30	4	4
63	74,75	1	1	36	60,95	1	1
				42	69,00	1	1
				48	74,75	1	1

Type: **17.03 10 . .**

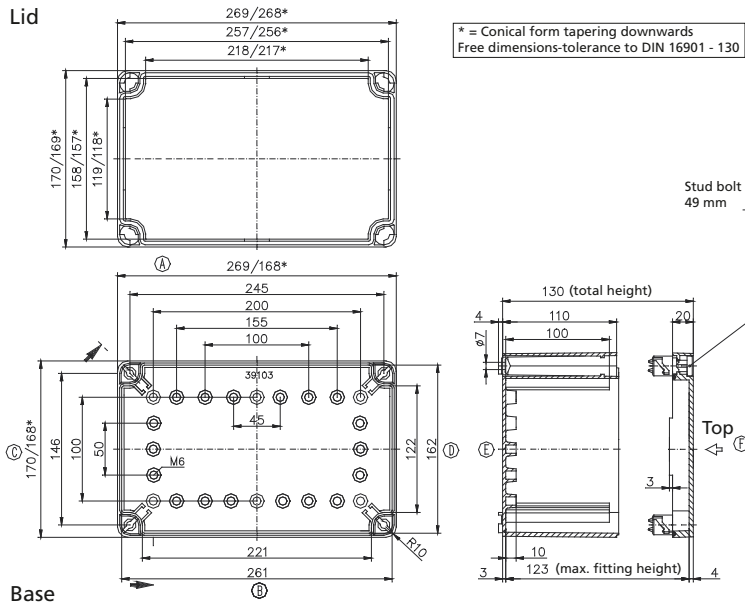
External dimensions: **170 x 269 x 130 mm**

Weight: **1209 g**

DIN rail length in mm	max. fitting length in mm	Mounting plate (thickness in mm)	External mounting brackets	Hinged lid	No. of flanges			
TS 35			•	•	4			
215	190	3	•	•	4			

Maximum number of cable glands to DIN 50262*

M	Corner dim.	Side		PG	Corner dim.	Side	
		A/B	C/D			A/B	C/D
12	17,25	60	27	7	17,25	60	27
16	25,30	28	12	9	21,85	35	16
20	27,60	21	10	11	25,30	28	12
25	37,95	12	5	13,5	27,60	21	10
32	48,30	8	4	16	31,05	18	9
40	60,95	4	2	21	37,95	11	5
50	69,00	3	1	29	48,30	8	4
63	74,75	2	1	36	60,95	3	1
				42	69,00	3	1
				48	74,75	2	1



Type: **17.04 10 . .**

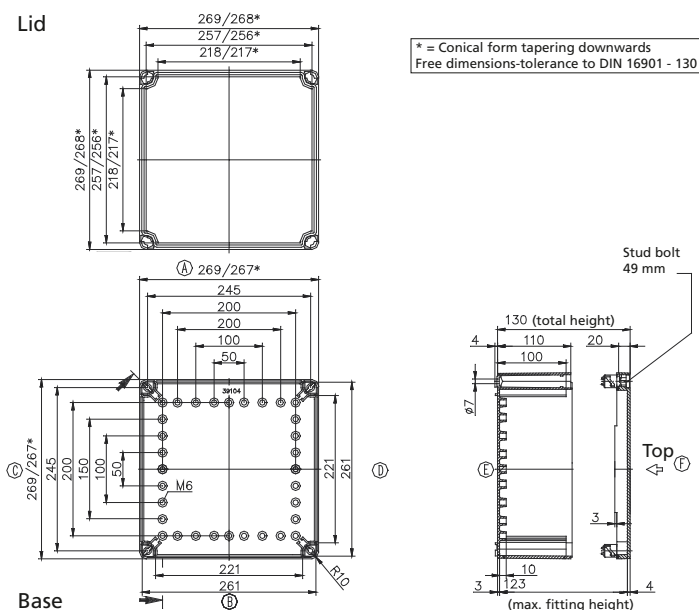
External dimensions: **269 x 269 x 130 mm**

Weight: **1707 g**

DIN rail length in mm	max. fitting length in mm	Mounting plate (thickness in mm)	External mounting brackets	Hinged lid	No. of flanges			
TS 35			•	•	4			
215	190	3	•	•	4			

Maximum number of cable glands to DIN 50262*

M	Corner dim.	Side		PG	Corner dim.	Side	
		A/B	C/D			A/B	C/D
12	17,25	60	60	7	17,25	60	60
16	25,30	28	28	9	21,85	35	35
20	27,60	21	21	11	25,30	28	28
25	37,95	12	12	13,5	27,60	21	21
32	48,30	8	8	16	31,05	18	18
40	60,95	4	4	21	37,95	11	11
50	69,00	3	3	29	48,30	8	8
63	74,75	2	2	36	60,95	3	3
				42	69,00	3	3
				48	74,75	2	2



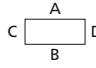
Type: **17.05 10 . .**

External dimensions: **269 x 540 x 130 mm**

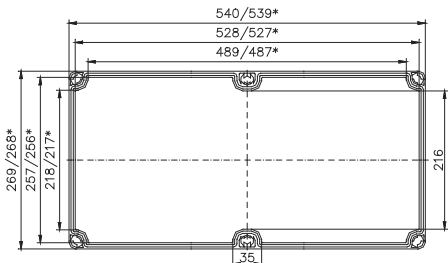
Weight: **3150 g**

DIN rail length in mm	max. fitting length in mm	Mounting plate (thickness in mm)	External mounting brackets	Hinged lid	No. of flanges			
TS 35	450	3	•	•	6			
485	450	3	•	•	6			

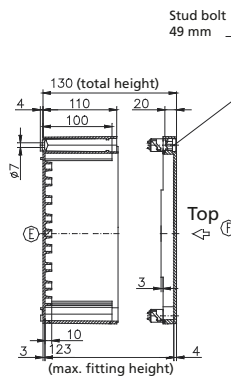
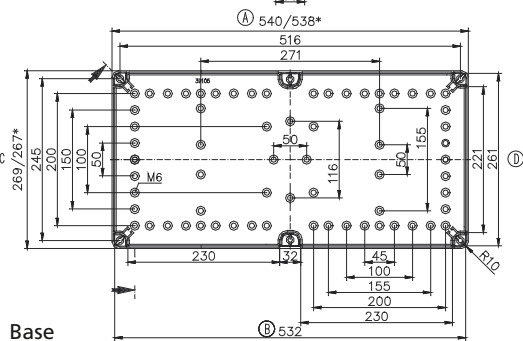
Maximum number of cable glands to DIN 50262*



Lid



* = Conical form tapering downwards
Free dimensions-tolerance to DIN 16901 - 130



M	Corner dim.	Side		PG	Corner dim.	Side	
		A/B	C/D			A/B	C/D
12	17,25	120	60	7	17,25	120	60
16	25,30	54	28	9	21,85	70	35
20	27,60	42	21	11	25,30	56	28
25	37,95	24	12	13,5	27,60	42	21
32	48,30	16	8	16	31,05	36	18
40	60,95	8	4	21	37,95	22	11
50	69,00	6	3	29	48,30	16	8
63	74,75	4	2	36	60,95	6	3
				42	69,00	6	3
				48	74,75	4	2

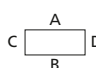
Type: **17.06 10 . .**

External dimensions: **269 x 441 x 130 mm**

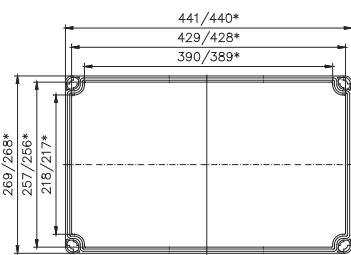
Weight: **2000 g**

DIN rail length in mm	max. fitting length in mm	Mounting plate (thickness in mm)	External mounting brackets	Hinged lid	No. of flanges			
TS 35	350	3	•	•	4			
385	350	3	•	•	4			

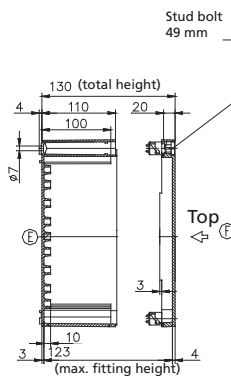
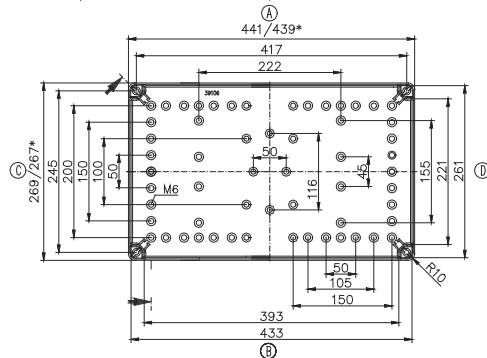
Maximum number of cable glands to DIN 50262*



Lid



* = Conical form tapering downwards
Free dimensions-tolerance to DIN 16901 - 130



M	Corner dim.	Side		PG	Corner dim.	Side	
		A/B	C/D			A/B	C/D
12	17,25	60	60	7	17,25	60	60
16	25,30	28	28	9	21,85	35	35
20	27,60	21	21	11	25,30	28	28
25	37,95	12	12	13,5	27,60	21	21
32	48,30	8	8	16	31,05	18	18
40	60,95	4	4	21	37,95	11	11
50	69,00	3	3	29	48,30	8	8
63	74,75	2	2	36	60,95	3	3
				42	69,00	3	3
				48	74,75	2	2

Base

Applications

