

## Polyester Ex



- + Glass fibre reinforced enclosure system of polyester-resin for use in all Ex-areas
- + Empty enclosures with U-approval for individual fittings and Ex eb / Ex ia terminal enclosures
- + Optional version with window

### Included in delivery

Empty enclosure: Enclosure system with silicone seal.  
 Junction box: Enclosure system - depending on version with silicone seal, DIN rails, internal earthing connection, terminals, continuity plate, manufacturing, cable glands

### Technical datas

<b>Explosion protection</b>	II 2 G Ex eb IIC T6/T5/T4 Gb II 2 G Ex ia IIC T6/T5/T4 Gb II 2 G Ex db eb ia [ia] mb IIC T6/T5/T4 Gb II 3 G Ex eb db mb ia [ia Ga] nA nC [op is] IIC T6, T5, T4 Gc II 2 D Ex tb IIIC T85 °C/T100 °C/T135 °C Db IP66
<b>Certificates</b>	PTB 00 ATEX 1002 IECEX PTB 08.0004 EAC RU C-DE.AA87.B.00637
<b>Material</b>	glass fibre reinforced duroplastic polyester, graphite added
<b>Colour</b>	RAL 9011, graphite black
<b>Ingress protection</b>	IP66 to EN 60529
<b>Impact resistance</b>	7 Joule to EN 60079-0
<b>Flammability</b>	self-extinguishing, UL 94 V-0
<b>Surface resistance</b>	<10 <sup>9</sup> Ohm to IEC 60093
<b>Toxicity</b>	halogen free
<b>Temperature range</b>	-55 °C to +135 °C
<b>Other execution on request</b>	EMC



# Polyester Ex

## Product overview

Ex e		Ex Empty		Ex i		Dimensions H x W x D (mm)	Weight (g)
Order no.	Product type	Order no.	Product type	Order no.	Product type		
06.08 08 06	PEXe 06010	26.08 08 06	PExB 26010	16.08 08 06	PEXi 16010	75 x 80 x 56	230
06.08 08 08	PEXe 06015	26.08 08 08	PExB 26015	16.08 08 08	PEXi 16015	75 x 80 x 75	300
06.08 11 06	PEXe 06020	26.08 11 06	PExB 26020	16.08 11 06	PEXi 16020	75 x 110 x 56	295
06.08 11 08	PEXe 06025	26.08 11 08	PExB 26025	16.08 11 08	PEXi 16025	75 x 110 x 75	360
06.08 16 06	PEXe 06030	26.08 16 06	PExB 26030	16.08 16 06	PEXi 16030	75 x 160 x 56	405
06.08 16 08	PEXe 06035	26.08 16 08	PExB 26035	16.08 16 08	PEXi 16035	75 x 160 x 75	460
06.08 19 06	PEXe 06040	26.08 19 06	PExB 26040	16.08 19 06	PEXi 16040	75 x 190 x 56	450
06.08 19 08	PEXe 06045	26.08 19 08	PExB 26045	16.08 19 08	PEXi 16045	75 x 190 x 75	530
06.08 23 06	PEXe 06050	26.08 23 06	PExB 26050	16.08 23 06	PEXi 16050	75 x 230 x 56	575
06.08 23 08	PEXe 06055	26.08 23 08	PExB 26055	16.08 23 08	PEXi 16055	75 x 230 x 75	670
06.12 12 09	PEXe 06060	26.12 12 09	PExB 26060	16.12 12 09	PEXi 16060	120 x 122 x 91	750
06.12 22 09	PEXe 06065	26.12 22 09	PExB 26065	16.12 22 09	PEXi 16065	120 x 220 x 91	1060
06.16 16 09	PEXe 06070	26.16 16 09	PExB 26070	16.16 16 09	PEXi 16070	160 x 160 x 91	1290
06.16 26 09	PEXe 06075	26.16 26 09	PExB 26075	16.16 26 09	PEXi 16075	160 x 260 x 91	1710
06.16 36 09	PEXe 06080	26.16 36 09	PExB 26080	16.16 36 09	PEXi 16080	160 x 360 x 91	2150
06.16 56 09	PEXe 06085	26.16 56 09	PExB 26085	16.16 56 09	PEXi 16085	160 x 560 x 91	3185
06.25 26 12	PEXe 06090	26.25 26 12	PExB 26090	16.25 26 12	PEXi 16090	250 x 255 x 121	2650
06.25 26 16	PEXe 06095	26.25 26 16	PExB 26095	16.25 26 16	PEXi 16095	250 x 255 x 161	3275
06.25 40 12	PEXe 06100	26.25 40 12	PExB 26100	16.25 40 12	PEXi 16100	250 x 400 x 121	3650
06.25 40 16	PEXe 06105	26.25 40 16	PExB 26105	16.25 40 16	PEXi 16105	250 x 400 x 161	4800
06.25 60 12	PEXe 06110	26.25 60 12	PExB 26110	16.25 60 12	PEXi 16115	250 x 600 x 121	5235
06.36 36 09	PEXe 06115	26.36 36 09	PExB 26115	16.36 36 09	PEXi 16120	360 x 360 x 91	4200
06.41 40 12	PEXe 06120	26.41 40 12	PExB 26120	16.41 40 12	PEXi 16125	405 x 400 x 121	5580
06.41 40 20	PEXe 06125	26.41 40 20	PExB 26125	16.41 40 20	PEXi 16130	405 x 400 x 201	6650



## Polyester Ex

### Terminal mounting

DIN rail	Phoenix Contact															Bartec	
	TS 15	TS 15	TS 35	TS 35	TS 35	TS 35	TS 35	TS 35	TS 35	TS 35	TS 35	TS 35					
Nominal cross section (mm <sup>2</sup> )	2,5	4	2,5	4	6	10	16	35	50	95	150	240					
Voltage (V)	352	352	690	690	690	690	690	690	690	880	1100	1100					
Terminal width (mm)	5,2	6,2	5,2	6,2	8,2	10,2	12,2	16,2	20	25	31	36					
Terminal type																	
Enclosure type	MUT 2,5	MUT 4	UT 2,5	UT 4	UT 6	UT 10	UT 16	UT 35	UKH 50	UKH 95	UKH 150	UKH 240	PE bar 1,5 to 6 mm <sup>2</sup>	Sheath clamp (2 x 4 mm <sup>2</sup> , 3 x 2,5 mm <sup>2</sup> each clamp)	Sheath clamp (2 x 6 mm <sup>2</sup> , 3 x 4 mm <sup>2</sup> , 4 x 2,5 mm <sup>2</sup> each clamp)	Ex Mini terminals	Ex Mini terminals blue
XX.08 08 06	7	6												2		3	3
XX.08 08 08	7	6												2			
XX.08 11 06	13	11												4			
XX.08 11 08	13	11												4			
XX.08 16 06	22	19												4			
XX.08 16 08	22	19												4			
XX.08 19 06	28	23												4			
XX.08 19 08	28	23												4			
XX.08 23 06	36	30												4			
XX.08 23 08	36	30												4			
XX.12 12 09	12	10	12	10	7	6	5								2		
XX.12 22 09	32	26	32	26	20	16	13								4		
XX.16 16 09	20	16	20	16	12	10	8	6					10				
XX.16 26 09	39	33	39	33	25	20	16	12					22				
XX.16 36 09	58	48	58	48	36	29	24	18					32				
XX.16 56 09	97	81	97	81	61	49	41	31					52				
XX.25 26 12	74	62	74	62	48	19	16	12	9				22				
XX.25 26 16	74	62	74	62	48	19	16	12	9	7			22				
XX.25 40 12	130	110	130	110	82	33	28	21	17				38				
XX.25 40 16	130	110	130	110	82	33	28	21	17	13			38				
XX.25 60 12	208	174	208	174	132	53	44	33	27				58				
XX.36 36 09	174	147	174	147	74	58	48	36					32				
XX.41 40 12	195	165	195	165	123	66	56	21	17				38				
XX.41 40 20	195	165	195	165	123	66	56	21	17	13	11	9	38				

Other suppliers on request

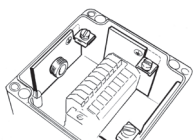


# Polyester Ex

## Accessories

Order no.	DIN rails	Mounting plate
XX.08 08 06	•	•
XX.08 08 08	•	•
XX.08 11 06	•	•
XX.08 11 08	•	•
XX.08 16 06	•	•
XX.08 16 08	•	•
XX.08 19 06	•	•
XX.08 19 08	•	•
XX.08 23 06	•	
XX.08 23 08	•	
XX.12 12 09	•	•
XX.12 22 09	•	•
XX.16 16 09	•	•
XX.16 26 09	•	•
XX.16 36 09	•	•
XX.16 56 09	•	•
XX.25 26 12	•	•
XX.25 26 16	•	•
XX.25 40 12	•	•
XX.25 40 16	•	•
XX.25 60 12	•	•
XX.36 36 09	•	•
XX.41 40 12	•	•
XX.41 40 20	•	•

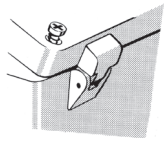
## Continuity plate



Order no.	Version
10.01 60 19	for XX.08 08 06, XX.08 11 06, XX.08 16 06, XX.08 19 06, XX.08 23 06
10.01 60 20	for XX.12 12 09, XX.12 22 09
10.01 60 21	for, XX.16 16 09, XX.16 26 09, XX.16 36 09, XX.16 56 09
10.01 60 22	for XX.36 36 09
10.01 60 23	for XX.25 26 12, XX.25 26 16, XX.25 40 12, XX.25 40 16, XX.41 40 12, XX.25 60 12
10.01 60 24	for XX.08 08 08, XX.08 11 08, XX.08 16 08, XX.08 19 08, XX.08 23 08
10.01 60 25	for XX.41 40 20

## Accessories

### External hinges

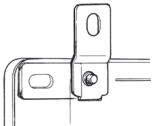


Swivelling range 150°,  
set = 2 pcs

Order no.

**10.02 70 01**

### External mounting brackets



set = 4 pcs

Order no.

Version

**10.03 11 01** for XX.08 08 06 - XX.10 20 08

**10.03 11 02** for XX.12 12 08 - XX.31 60 18, XX.14 01 00 - XX.14 03 00

**10.03 10 08** for XX.20 20 00, XX.20 30 00

### DIN rails



Order no.

Version

**10.06 10 03** TS 15 for XX.08 08 06, XX.08 08 08

**10.06 11 02** TS 15 for XX.08 11 06, XX.08 11 08

**10.06 10 08** TS 15 for XX.08 16 06, XX.08 16 08

**10.06 10 10** TS 15 for XX.08 19 06, XX.08 19 08

**10.06 11 05** TS 15 for XX.08 23 06, XX.08 23 08

**10.06 14 21** TS 35/7.5 for XX.12 12 09

**10.06 14 22** TS 35/7.5 for XX.12 22 09

**10.06 14 23** TS 35/7.5 for XX.16 16 09

**10.06 14 24** TS 35/7.5 for XX.16 26 09

**10.06 14 25** TS 35/7.5 for XX.16 36 09

**10.06 14 26** TS 35/7.5 for XX.16 56 09

**10.06 14 34** TS 35/7.5 for XX.25 26 12, XX.25 26 16

**10.06 14 27** TS 35/7.5 for XX.25 40 12, XX.25 40 16

**10.06 14 28** TS 35/7.5 for XX.25 60 12

### PE bar



Order no.

Version

**12.05 42 62** for XX.16 16 09

**12.05 42 63** for XX.16 26 09, XX.25 26 12, XX.25 26 16

**12.05 42 64** for XX.16 36 09, XX.36 36 09

**12.05 42 65** for XX.16 56 09

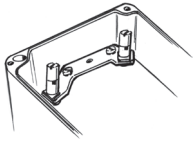
**12.05 42 68** for XX.25 40 12, XX.25 40 16, XX.41 40 12, XX.41 40 20

**12.05 42 70** for XX.25 60 12

# Polyester Ex

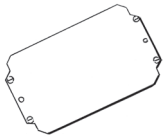
## Accessories

### PE busbar



Order no.	Version
12.05 30 03	for XX.08 08 06 - XX.08 16 08
12.05 30 04	for XX.08 19 06 - XX.08 23 08
12.05 30 05	for XX.12 12 09 - XX.12 22 09

### Mounting plate



Order no.	Version
10.01 11 01	for XX.08 08 06, XX.08 08 08
10.01 11 03	for XX.08 11 06, XX.08 11 08
10.01 11 05	for XX.08 16 06, XX.08 16 08
10.01 11 07	for XX.08 19 06, XX.08 19 08
10.01 10 07	for XX.12 12 08, XX.12 12 09
10.01 10 08	for XX.12 22 08, XX.12 22 09
10.01 10 10	for XX.16 16 09
10.01 10 11	for XX.16 26 09
10.01 10 12	for XX.16 36 09
10.01 10 13	for XX.16 56 09
10.01 11 15	for XX.25 26 12, XX.25 26 16
10.01 11 16	for XX.25 40 12, XX.25 40 16
10.01 11 17	for XX.25 60 12
10.01 11 18	for XX.36 36 09
10.01 11 19	for XX.41 40 12, XX.41 40 20



# Polyester Ex

## Technical details



Order no.	Product type	Dimensions H x W x D (mm)
06.08 08 06	PExe 06010	75 x 80 x 56
16.08 08 06	PExi 16010	75 x 80 x 56
26.08 08 06	PExB 26010	75 x 80 x 56

	1,5	2,5	4	6	10	16	25	35	50	70	95
		7	7								
N	1	1									
x A	6										
	10	27									
	16	9	18								
	20	3	10								
	25		5								
	35										
	50										
	63										
	80										
	100										
	125										
	160										
	200										
	225										
	250										
315											
400											
500											

Maximum number of cable glands

M	Side	
	A/B	C/D
12	6	3
16	2	1
20	2	1
25	1	
32		
40		
50		
63		
75		
85		

DIN rail	TS 15
Length (mm)	63
max. fitting length (mm)	38,5



Order no.	Product type	Dimensions H x W x D (mm)
06.08 08 08	PExe 06015	75 x 80 x 75
16.08 08 08	PExi 16015	75 x 80 x 75
26.08 08 08	PExB 26015	75 x 80 x 75

	1,5	2,5	4	6	10	16	25	35	50	70	95
		8	8	7							
N	1	1	1								
x A	6										
	10	32									
	16	11	21	84							
	20	4	12	24							
	25		6	13							
	35			4							
	50										
	63										
	80										
	100										
	125										
	160										
	200										
	225										
	250										
315											
400											
500											

Maximum number of cable glands

M	Side	
	A/B	C/D
12	9	5
16	5	2
20	4	2
25	1	1
32	1	1
40		
50		
63		
75		
85		

DIN rail	TS 15
Length (mm)	63
max. fitting length (mm)	38,5



# Polyester Ex

## Technical details



Order no.	Product type	Dimensions H x W x D (mm)
06.08 11 06	PEExe 06020	75 x 110 x 56
16.08 11 06	PEXi 16020	75 x 110 x 56
26.08 11 06	PExB 26020	75 x 110 x 56

Symbol	1,5	2,5	4	6	10	16	25	35	50	70	95
	13	13									
	1	1									
x A	6										
	10	28									
	16	9	18								
	20	4	11								
	25		5								
	35										
	50										
	63										
	80										
	100										
	125										
	160										
	200										
	225										
	250										
	315										
	400										
500											

Maximum number of cable glands

M	Side	
	A/B	C/D
12	6	3
16	3	1
20	2	1
25	1	
32		
40		
50		
63		
75		
85		

DIN rail	TS 15
Length (mm)	98
max. fitting length (mm)	68,5



Order no.	Product type	Dimensions H x W x D (mm)
06.08 11 08	PEExe 06025	75 x 110 x 75
16.08 11 08	PEXi 16025	75 x 110 x 75
26.08 11 08	PExB 26025	75 x 110 x 75

Symbol	1,5	2,5	4	6	10	16	25	35	50	70	95
	14	14	11								
	1	1	1								
x A	6										
	10	33									
	16	11	22	86							
	20	4	13	25							
	25		6	14							
	35			4							
	50										
	63										
	80										
	100										
	125										
	160										
	200										
	225										
	250										
	315										
	400										
500											

Maximum number of cable glands

M	Side	
	A/B	C/D
12	15	5
16	6	2
20	6	1
25	2	1
32	2	1
40		
50		
63		
75		
85		

DIN rail	TS 15
Length (mm)	98
max. fitting length (mm)	68,5



# Polyester Ex

## Technical details



Order no.	Product type	Dimensions H x W x D (mm)
06.08 16 06	PEEx 06030	75 x 160 x 56
16.08 16 06	PEXi 16030	75 x 160 x 56
26.08 16 06	PExB 26030	75 x 160 x 56

		1,5	2,5	4	6	10	16	25	35	50	70	95
		23	23									
		1	1									
x  A	6											
	10	28										
	16	9	19									
	20	4	11									
	25		5									
	35											
	50											
	63											
	80											
	100											
	125											
	160											
	200											
	225											
	250											
	315											
400												
500												

Maximum number of cable glands

M	Side	
	A/B	C/D
12	12	3
16	5	1
20	4	1
25	3	
32		
40		
50		
63		
75		
85		

DIN rail	TS 15
Length (mm)	148
max. fitting length (mm)	118,5



Order no.	Product type	Dimensions H x W x D (mm)
06.08 16 08	PEEx 06035	75 x 160 x 75
16.08 16 08	PEXi 16035	75 x 160 x 75
26.08 16 08	PExB 26035	75 x 160 x 75

		1,5	2,5	4	6	10	16	25	35	50	70	95
		23	23	20								
		1	1	1								
x  A	6											
	10	34										
	16	11	22	87								
	20	4	13	25								
	25		6	14								
	35			4								
	50											
	63											
	80											
	100											
	125											
	160											
	200											
	225											
	250											
	315											
400												
500												

Maximum number of cable glands

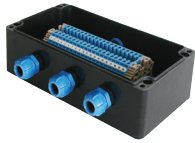
M	Side	
	A/B	C/D
12	18	5
16	8	2
20	8	2
25	3	1
32	2	1
40		
50		
63		
75		
85		

DIN rail	TS 15
Length (mm)	148
max. fitting length (mm)	118,5



# Polyester Ex

## Technical details



Order no.	Product type	Dimensions H x W x D (mm)
06.08 19 06	PExe 06040	75 x 190 x 56
16.08 19 06	PExi 16040	75 x 190 x 56
26.08 19 06	PExB 26040	75 x 190 x 56

	1,5	2,5	4	6	10	16	25	35	50	70	95
	28	28									
	1	1									
x A	6										
	10	28									
	16	9	19								
	20	4	11								
	25		5								
	35										
	50										
	63										
	80										
	100										
	125										
	160										
	200										
	225										
	250										
	315										
	400										
500											

Maximum number of cable glands



M	Side	
	A/B	C/D
12	16	4
16	7	1
20	5	1
25	4	1
32		
40		
50		
63		
75		
85		

DIN rail	TS 15
Length (mm)	174
max. fitting length (mm)	148,5



Order no.	Product type	Dimensions H x W x D (mm)
06.08 19 08	PExe 06045	75 x 190 x 75
16.08 19 08	PExi 16045	75 x 190 x 75
26.08 19 08	PExB 26045	75 x 190 x 75

	1,5	2,5	4	6	10	16	25	35	50	70	95
	29	29	24								
	1	1	1								
x A	6										
	10	33									
	16	11	22	87							
	20	4	13	25							
	25		6	14							
	35			4							
	50										
	63										
	80										
	100										
	125										
	160										
	200										
	225										
	250										
	315										
	400										
500											

Maximum number of cable glands



M	Side	
	A/B	C/D
12	28	6
16	12	2
20	12	2
25	5	1
32	3	1
40		
50		
63		
75		
85		

DIN rail	TS 15
Length (mm)	174
max. fitting length (mm)	148,5



# Polyester Ex

## Technical details



Order no.	Product type	Dimensions H x W x D (mm)
06.08 23 06	PExe 06050	75 x 230 x 56
16.08 23 06	PExi 16050	75 x 230 x 56
26.08 23 06	PExB 26050	75 x 230 x 56

	1,5	2,5	4	6	10	16	25	35	50	70	95
		36	36								
	1	1									
 x A	6										
	10	28									
	16	9	19								
	20	4	11								
	25		5								
	35										
	50										
	63										
	80										
	100										
	125										
	160										
	200										
	225										
	250										
	315										
400											
500											

Maximum number of cable glands

M	Side	
	A/B	C/D
12	22	3
16	10	1
20		1
25	4	1
32		
40		
50		
63		
75		
85		

DIN rail	TS 15
Length (mm)	218
max. fitting length (mm)	188,5



Order no.	Product type	Dimensions H x W x D (mm)
06.08 23 08	PExe 06055	75 x 230 x 75
16.08 23 08	PExi 16055	75 x 230 x 75
26.08 23 08	PExB 26055	75 x 230 x 75

	1,5	2,5	4	6	10	16	25	35	50	70	95
		37	37	31							
	1	1	1								
 x A	6										
	10	33									
	16	11	22	86							
	20	4	13	25							
	25		6	14							
	35			4							
	50										
	63										
	80										
	100										
	125										
	160										
	200										
	225										
	250										
	315										
400											
500											

Maximum number of cable glands

M	Side	
	A/B	C/D
12	30	6
16	16	2
20	12	2
25	6	1
32	4	1
40		
50		
63		
75		
85		

DIN rail	TS 15
Length (mm)	218
max. fitting length (mm)	188,5



# Polyester Ex

## Technical details



Order no.	Product type	Dimensions H x W x D (mm)
06.12 12 09	PEExe 06060	120 x 122 x 91
16.12 12 09	PEXi 16060	120 x 122 x 91
26.12 12 09	PExB 26060	120 x 122 x 91

		1,5	2,5	4	6	10	16	25	35	50	70	95
		19	15	13	10	8	6					
		1	1	1	1	1	1					
x  A	6											
	10	43										
	16	14	28	111								
	20	6	16	32								
	25		8	18	35							
	35			5	13	34						
	50				2	11	28					
	63					3	13					
	80						5					
	100											
	125											
	160											
	200											
	225											
	250											
	315											
	400											
500												

Maximum number of cable glands



M	Side	
	A/B	C/D
12	12	12
16	5	5
20	4	4
25	2	2
32	1	1
40	1	1
50		
63		
75		
85		

DIN rail	TS 35
Length (mm)	107
max. fitting length (mm)	65



Order no.	Product type	Dimensions H x W x D (mm)
06.12 22 09	PEExe 06065	120 x 220 x 91
16.12 22 09	PEXi 16065	120 x 220 x 91
26.12 22 09	PExB 26065	120 x 220 x 91

		1,5	2,5	4	6	10	16	25	35	50	70	95
		42	34	29	21	17	14					
		1	1	1	1	1	1					
x  A	6											
	10	46										
	16	15	30	119								
	20	6	18	34								
	25		8	19	37							
	35			5	14	36						
	50				2	12	30					
	63					4	14					
	80						5					
	100											
	125											
	160											
	200											
	225											
	250											
	315											
	400											
500												

Maximum number of cable glands



M	Side	
	A/B	C/D
12	32	12
16	14	5
20	12	4
25	6	2
32	3	1
40	2	1
50		
63		
75		
85		

DIN rail	TS 35
Length (mm)	205
max. fitting length (mm)	166,5



# Polyester Ex

## Technical details



Order no.	Product type	Dimensions H x W x D (mm)
06.16 16 09	PEEx 06070	160 x 160 x 91
16.16 16 09	PEXi 16070	160 x 160 x 91
26.16 16 09	PExB 26070	160 x 160 x 91

		1,5	2,5	4	6	10	16	25	35	50	70	95
		28	23	19	14	11	9	7	7			
		1	1	1	1	1	1	1	1			
x  A	6											
	10	48										
	16	16	32	125								
	20	7	19	36								
	25		9	20	39							
	35			6	15	38						
	50				2	12	32					
	63					4	14	52				
	80						5	16	59			
	100							7	15			
	125								6			
	160											
	200											
	225											
	250											
	315											
400												
500												

Maximum number of cable glands

M	Side	
	A/B	C/D
12	26	18
16	14	8
20	9	6
25	6	3
32	3	2
40	2	1
50	2	1
63		
75		
85		

DIN rail	TS 35
Length (mm)	144
max. fitting length (mm)	105



Order no.	Product type	Dimensions H x W x D (mm)
06.16 26 09	PEEx 06075	160 x 260 x 91
16.16 26 09	PEXi 16075	160 x 260 x 91
26.16 26 09	PExB 26075	160 x 260 x 91

		1,5	2,5	4	6	10	16	25	35	50	70	95
		52	42	35	26	21	18	14	14			
		1	1	1	1	1	1	1	1			
x  A	6											
	10	52										
	16	18	35	136								
	20	7	20	39								
	25		9	22	43							
	35			6	16	41						
	50				2	13	34					
	63					4	16	57				
	80						6	17	64			
	100							7	16			
	125								6			
	160											
	200											
	225											
	250											
	315											
400												
500												

Maximum number of cable glands

M	Side	
	A/B	C/D
12	50	16
16	26	8
20	17	6
25	11	3
32	5	2
40	3	1
50	3	
63		
75		
85		

DIN rail	TS 35
Length (mm)	245
max. fitting length (mm)	205



# Polyester Ex

## Technical details



Order no.	Product type	Dimensions H x W x D (mm)
06.16 36 09	PEXe 06080	160 x 360 x 91
16.16 36 09	PEXi 16080	160 x 360 x 91
26.16 36 09	PExB 26080	160 x 360 x 91

		1,5	2,5	4	6	10	16	25	35	50	70	95
		76	61	51	39	31	26	21	21			
		1	1	1	1	1	1	1	1			
x  A	6											
	10	53										
	16	18	35	138								
	20	7	20	40								
	25		9	22	43							
	35			6	17	42						
	50				2	14	35					
	63					4	16	58				
	80						6	18	65			
	100							7	17			
	125								7			
	160											
	200											
	225											
	250											
	315											
	400											
500												

Maximum number of cable glands



M	Side	
	A/B	C/D
12	72	18
16	38	8
20	26	6
25	16	3
32	7	2
40	5	1
50	4	1
63		
75		
85		

DIN rail	TS 35
Length (mm)	343
max. fitting length (mm)	302



Order no.	Product type	Dimensions H x W x D (mm)
06.16 56 09	PEXe 06085	160 x 560 x 91
16.16 56 09	PEXi 16085	160 x 560 x 91
26.16 56 09	PExB 26085	160 x 560 x 91

		1,5	2,5	4	6	10	16	25	35	50	70	95
		123	100	83	63	50	42	34	34			
		1	1	1	1	1	1	1	1			
x  A	6											
	10	53										
	16	18	35	138								
	20	7	20	40								
	25		9	22	43							
	35			6	17	42						
	50				2	14	35					
	63					4	16	58				
	80						6	18	65			
	100							7	17			
	125								7			
	160											
	200											
	225											
	250											
	315											
	400											
500												

Maximum number of cable glands



M	Side	
	A/B	C/D
12	112	18
16	58	8
20	40	6
25	24	3
32	12	2
40	8	1
50	6	1
63		
75		
85		

DIN rail	TS 35
Length (mm)	543
max. fitting length (mm)	508



# Polyester Ex

## Technical details



Order no.	Product type	Dimensions H x W x D (mm)
06.25 26 12	PEEx 06090	250 x 255 x 121
16.25 26 12	PEXi 16090	250 x 255 x 121
26.25 26 12	PExB 26090	250 x 255 x 121

		1,5	2,5	4	6	10	16	25	35	50	70	95
		102	82	68	52	21	17	14	14	10		
		2	2	2	2	1	1	1	1	1		
x 	6											
	10	70										
	16	24	47	182								
	20	10	27	52								
	25		13	30	57							
	35			8	22	56						
	50				3	18	46					
	63					6	21	76				
	80						8	24	85			
	100							10	22			
	125								9	22		
	160									7		
	200											
	225											
	250											
	315											
400												
500												

Maximum number of cable glands

M	Side	
	A/B	C/D
12	69	51
16	32	24
20	24	18
25	12	10
32	8	7
40	4	3
50	3	3
63	3	2
75		
85		

DIN rail	TS 35
Length (mm)	238
max. fitting length (mm)	197



Order no.	Product type	Dimensions H x W x D (mm)
06.25 26 16	PEEx 06095	250 x 255 x 161
16.25 26 16	PEXi 16095	250 x 255 x 161
26.25 26 16	PExB 26095	250 x 255 x 161

		1,5	2,5	4	6	10	16	25	35	50	70	95
		102	82	68	52	21	17	14	14	10	8	
		2	2	2	2	1	1	1	1	1	1	
x 	6											
	10	82										
	16	28	54	211								
	20	11	31	61								
	25		15	34	67							
	35			10	26	65						
	50				3	21	54					
	63					7	25	88				
	80						9	27	99			
	100							12	26			
	125								10	26		
	160									9	23	
	200										8	
	225											3
	250											
	315											
400												
500												

Maximum number of cable glands

M	Side	
	A/B	C/D
12	69	51
16	32	24
20	24	18
25	12	10
32	8	7
40	4	3
50	3	3
63	3	2
75		
85		

DIN rail	TS 35
Length (mm)	238
max. fitting length (mm)	197



# Polyester Ex

## Technical details



Order no.	Product type	Dimensions H x W x D (mm)
06.25 40 12	PEXe 06100	250 x 400 x 121
16.25 40 12	PEXi 16100	250 x 400 x 121
26.25 40 12	PExB 26100	250 x 400 x 121

		1,5	2,5	4	6	10	16	25	35	50	70	95
		170	138	116	86	35	29	23	23	18		
		2	2	2	2	1	1	1	1	1		
x  A	6											
	10	76										
	16	26	50	197								
	20	10	29	57								
	25		14	32	62							
	35			9	24	60						
	50				3	19	50					
	63					6	23	82				
	80						9	26	92			
	100							11	24			
	125								9	24		
	160									8		
	200											
	225											
	250											
	315											
	400											
500												

Maximum number of cable glands



M	Side	
	A/B	C/D
12	117	50
16	56	22
20	42	18
25	21	10
32	14	6
40	7	3
50	5	2
63	5	2
75		
85		

DIN rail	TS 35
Length (mm)	381
max. fitting length (mm)	342



Order no.	Product type	Dimensions H x W x D (mm)
06.25 40 16	PEXe 06105	250 x 400 x 161
16.25 40 16	PEXi 16105	250 x 400 x 161
26.25 40 16	PExB 26105	250 x 400 x 161

		1,5	2,5	4	6	10	16	25	35	50	70	95
		170	138	116	86	35	29	23	23	18	14	
		2	2	2	2	1	1	1	1	1	1	
x  A	6											
	10	87										
	16	30	58	226								
	20	12	34	65								
	25		16	37	71							
	35			11	28	69						
	50				4	22	57					
	63					7	26	95				
	80						10	29	106			
	100							12	28			
	125								11	28		
	160									9	25	
	200										9	
	225											3
	250											
	315											
	400											
500												

Maximum number of cable glands



M	Side	
	A/B	C/D
12	117	50
16	56	22
20	42	18
25	21	10
32	14	6
40	7	3
50	5	2
63	5	2
75		
85		

DIN rail	TS 35
Length (mm)	381
max. fitting length (mm)	342



# Polyester Ex

## Technical details



Order no.	Product type	Dimensions H x W x D (mm)
06.25 60 12	PEEx 06110	250 x 600 x 121
16.25 60 12	PEXi 16115	250 x 600 x 121
26.25 60 12	PExB 26110	250 x 600 x 121

		1,5	2,5	4	6	10	16	25	35	50	70	95
		266	214	180	136	54	45	36	36	28		
		2	2	2	2	1	1	1	1	1		
x 	6											
	10	78										
	16	27	52	202								
	20	11	30	58								
	25		14	33	64							
	35			9	25	62						
	50				3	20	51					
	63					6	24	85				
	80						9	26	95			
	100							11	25			
	125								10	25		
	160									8		
	200											
	225											
	250											
	315											
400												
500												

Maximum number of cable glands

M	Side	
	A/B	C/D
12	108	50
16	52	24
20	36	18
25	30	10
32	12	7
40	6	3
50	4	3
63	4	2
75		
85		

DIN rail	TS 35
Length (mm)	581
max. fitting length (mm)	542



Order no.	Product type	Dimensions H x W x D (mm)
06.36 36 09	PEEx 06115	360 x 360 x 91
16.36 36 09	PEXi 16120	360 x 360 x 91
26.36 36 09	PExB 26115	360 x 360 x 91

		1,5	2,5	4	6	10	16	25	35	50	70	95
		228	183	153	78	62	52	42	42			
		3	3	3	2	2	2	2	2			
x 	6											
	10	77										
	16	26	51	199								
	20	11	30	58								
	25		14	32	63							
	35			9	24	61						
	50				3	20	50					
	63					6	23	83				
	80						9	26	93			
	100							11	24			
	125								10			
	160											
	200											
	225											
	250											
	315											
400												
500												

Maximum number of cable glands

M	Side	
	A/B	C/D
12	72	52
16	38	24
20	26	20
25	16	10
32	7	6
40	5	5
50	4	
63		
75		
85		

DIN rail	TS 35
Length (mm)	343
max. fitting length (mm)	304



# Polyester Ex

## Technical details



Order no.	Product type	Dimensions H x W x D (mm)
06.41 40 12	PEXe 06120	405 x 400 x 121
16.41 40 12	PEXi 16125	405 x 400 x 121
26.41 40 12	PExB 26120	405 x 400 x 121

		1,5	2,5	4	6	10	16	25	35	50	70	95
		255	207	174	129	70	58	23	23	18		
		3	3	3	3	2	2	1	1	1		
x  A	6											
	10	92										
	16	31	61	237								
	20	13	35	69								
	25		17	39	75							
	35			11	29	73						
	50				4	24	60					
	63					8	28	99				
	80						10	31	111			
	100							13	29			
	125								12	29		
	160										10	
	200											
	225											
	250											
	315											
	400											
500												

Maximum number of cable glands



M	Side	
	A/B	C/D
12	117	95
16	56	46
20	42	36
25	21	18
32	14	13
40	7	6
50	5	5
63	5	4
75		
85		

DIN rail	TS 35
Length (mm)	381
max. fitting length (mm)	342



Order no.	Product type	Dimensions H x W x D (mm)
06.41 40 20	PEXe 06125	405 x 400 x 201
16.41 40 20	PEXi 16130	405 x 400 x 201
26.41 40 20	PExB 26125	405 x 400 x 201

		1,5	2,5	4	6	10	16	25	35	50	70	95	120	150
		255	207	174	129	70	58	23	23	18	14	14	11	11
		3	3	3	3	2	2	1	1	1	1	1	1	1
x  A	6													
	10	114												
	16	39	76	295										
	20	16	44	85										
	25		21	48	93									
	35			14	36	91								
	50				5	29	75							
	63					10	35	124						
	80						13	39	139					
	100							16	36					
	125								14	37				
	160									12	32			
	200										11	28	87	
	225										4	16	34	
	250											8	21	43
	315												4	12
	400													
500														

Maximum number of cable glands



M	Side	
	A/B	C/D
12	210	190
16	98	91
20	88	77
25	45	43
32	28	26
40	17	15
50	12	11
63	9	8
75		
85		

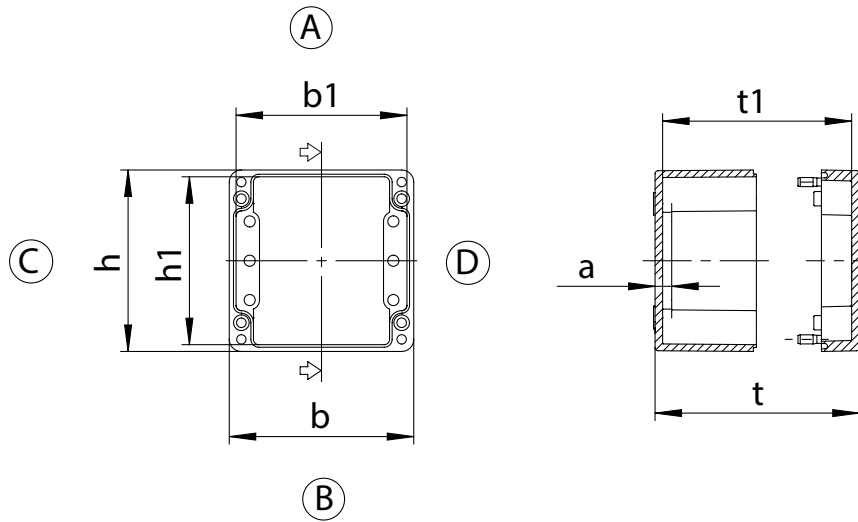
DIN rail	TS 35
Length (mm)	381
max. fitting length (mm)	342



# Polyester Ex

## Technical details

Order no.	b	h	t	b1	h1	t1	a
XX.08 08 06	80	75	56	71	66	46	10,5
XX.08 08 08	80	75	75	71	66	65	10,5
XX.12 12 09	122	120	91	113	111	80	11
XX.16 16 09	160	160	91	148	141	79	11,5
XX.36 36 09	360	360	91	348	348	79	11,5
XX.41 40 12	400	405	121	388	393	109	11,5
XX.41 40 20	401	406	201	388	393	189	11,5



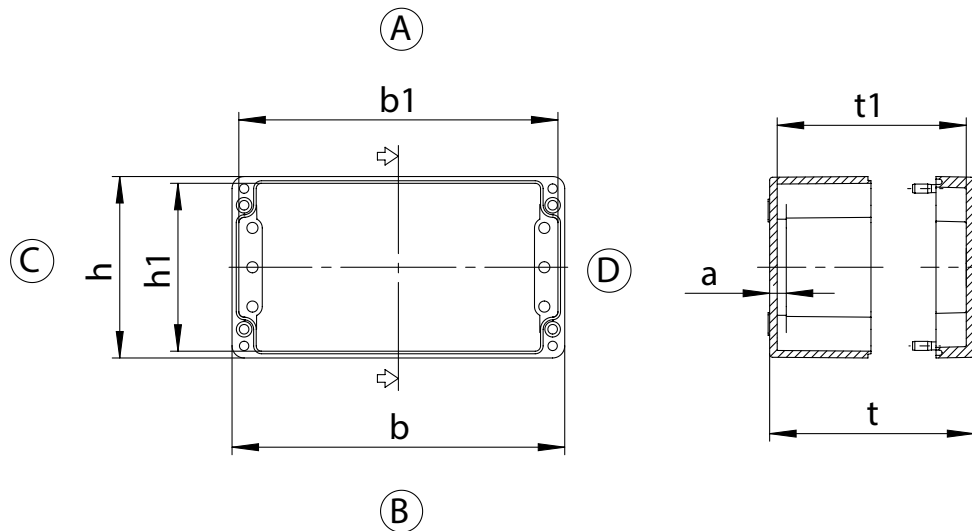
For detailed drawings visit [www.rose-pw.de](http://www.rose-pw.de)



# Polyester Ex

## Technical details

Order no.	b	h	t	b1	h1	t1	a
XX.08 11 06	110	75	56	101	66	46	10,5
XX.08 11 08	110	75	75	101	66	65	10,5
XX.08 16 06	160	75	56	151	66	46	10,5
XX.08 16 08	160	75	75	151	66	65	10,5
XX.08 19 06	190	75	56	181	66	46	10,5
XX.08 19 08	190	75	75	181	66	65	10,5
XX.08 23 06	230	75	56	221	66	46	10,5
XX.08 23 08	230	75	75	221	66	65	10,5
XX.12 22 09	220	120	91	211	111	80	11
XX.16 26 09	260	160	91	248	141	79	11,5
XX.16 36 09	360	160	91	348	141	79	11,5
XX.16 56 09	560	160	91	548	148	79	11,5
XX.25 26 12	255	250	121	243	238	109	11,5
XX.25 26 16	255	250	161	243	238	149	11,5
XX.25 40 12	400	250	121	388	238	109	11,5
XX.25 40 16	400	250	161	388	238	149	11,5
XX.25 60 12	600	250	121	588	238	109	11,5



For detailed drawings visit [www.rose-pw.de](http://www.rose-pw.de)



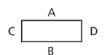


# PExcom - pre-assembled polyester Ex enclosures

## Product range

Order No.	Type	B x L x H (mm)	Execution
<b>06.08 08 06 4</b>	PExcom 1	75 x 80 x 56	Fitting with terminals and cable glands
<b>06.12 12 09 4</b>	PExcom 2	120 x 122 x 91	Fitting with terminals and cable glands
<b>06.16 16 09 4</b>	PExcom 3	160 x 160 x 91	Fitting with terminals and cable glands
<b>06.16 26 09 4</b>	PExcom 4	160 x 260 x 91	Fitting with terminals and cable glands

## Technical details



Type	Order No.	Dimensions (mm) H x W x D	Execution
PExcom 1	<b>06.08 08 06 4</b>	75 x 80 x 56	Fitting: TS 15 with 4 x Phoenix Contact MUT 2,5; 2 x Phoenix Contact MUT 2,5 PE Cable entry: Side A: 1 x M20 (Ø 6-12 mm) Side B: 2 x M16 (Ø 5-8 mm)



Type	Order No.	Dimensions (mm) H x W x D	Execution
PExcom 2	<b>06.12 12 09 4</b>	120 x 122 x 91	Fitting: TS 35/7,5 with 9 x Phoenix Contact UT 4; 2 x Phoenix Contact UT 4 PE Cable entry: Side B: 4 x M20 (Ø 6-12 mm)



Type	Order No.	Dimensions (mm) H x W x D	Execution
PExcom 3	<b>06.16 16 09 4</b>	160 x 160 x 91	Fitting: TS 35/7,5 with 14 x Phoenix Contact UT 4; 3 x Phoenix Contact UT 4 PE Cable entry: Side B: 6 x M20 (Ø 6-12 mm)



Type	Order No.	Dimensions (mm) H x W x D	Execution
PExcom 4	<b>06.16 26 09 4</b>	160 x 260 x 91	Fitting: TS 35/7,5 with 25 x Phoenix Contact UT 4; 4 x Phoenix Contact UT 4 PE Cable entry: Side B: 1 x M32 (Ø 18-25 mm) and 8 x M20 (Ø 6-12 mm)

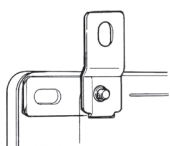
## External mounting brackets

Set = 4 pcs.

Order No.

**10.03 11 01** for 06.08 08 06 4

**10.03 11 02** for 06.12 12 09 4 to 06.16 26 09 4



## Polyester Ex CombiBox



- + Polyester GRP enclosure systems for Ex application
- + Application: Ex junction boxes / Ex control stations
- + Two level fitting possibility

### Included in delivery

Empty enclosure: Base and top with silicon seal, internal fixing, sleeves for base mounting, 4 polyamide system elements for individual height adjustment.  
 Junction box: Enclosure system -as before- with individual fitting, DIN rails, terminals, cable gland

### Technical datas

<b>Explosion protection</b>	II 2 G Ex eb IIC T6/T5/T4 Gb II 2 G Ex ia IIC T6/T5/T4 Gb II 2 G Ex db eb ia [ia] mb IIC T6/T5/T4 Gb II 3 G Ex eb db mb ia [ia Ga] nA nC [op is] IIC T6, T5, T4 Gc II 2 D Ex tb IIIC T85 °C/T100 °C/T135 °C Db IP66
<b>Certificates</b>	PTB 00 ATEX 1002 IECEX PTB 08.0004 EAC RU C-DE.AA87.B.00637
<b>Material</b>	glass fibre reinforced duroplastic polyester, graphite added
<b>Colour</b>	RAL 9011, graphite black
<b>Ingress protection</b>	IP66 to EN 60529
<b>Impact resistance</b>	7 Joule to EN 60079-0
<b>Flammability</b>	self-extinguishing, UL 94 V-0
<b>Surface resistance</b>	<10 <sup>9</sup> Ohm to IEC 60093
<b>Toxicity</b>	halogen free
<b>Temperature range</b>	-55 °C to +135 °C
<b>Other execution on request</b>	EMC



# Polyester Ex CombiBox

## Product overview

Ex e		Ex Empty		Ex i		Dimensions H x W x D (mm)	Weight (g)
Order no.	Product type	Order no.	Product type	Order no.	Product type		
06.01 22 15	CB 1 Exe	26.01 22 15	CB 1 ExB	16.01 22 15	CB 1 Exi	177 x 177 x 145	1710
06.01 24 15	CB 2 Exe	26.01 24 15	CB 2 ExB	16.01 24 15	CB 2 Exi	360 x 177 x 145	2730
06.01 44 15	CB 3 Exe	26.01 44 15	CB 3 ExB	16.01 44 15	CB 3 Exi	360 x 360 x 145	4050

## Terminal mounting

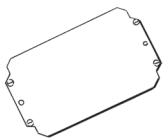
DIN rail	Phoenix Contact										
	TS 15	TS 15	TS 35	TS 35	TS 35	TS 35	TS 35	TS 35	TS 35	TS 35	TS 35
Nominal cross section (mm <sup>2</sup> )	2,5	4	2,5	4	6	10	16	35	50	95	150
Spannung (V)	352	352	690	690	690	690	690	690	690	880	1100
Terminal width (mm)	5,2	6,2	5,2	6,2	8,2	10,2	12,2	16,2	20	25	31
Terminal type											
Enclosure type	MUT 2,5	MUT 4	UT 2,5	UT 4	UT 6	UT 10	UT 16	UT 35	UKH 50	UKH 95	UKH 150
XX.01 22 15	22	18	22	18	14	11	9	7			
XX.01 24 15	54	45	54	45	34	27	23	17			
XX.01 44 15	216	135	216	135	102	81	46	34	28	11	11

Other suppliers on request

## Accessories

Order no.	Connecting flange	DIN rails	Mounting plate
XX.01 22 15	•	•	•
XX.01 24 15	•	•	•
XX.01 44 15	•	•	•

### Mounting plate



Order no.      Version

02.01 99 10	for CombiBox 1
02.01 99 11	for CombiBox 2
02.01 99 12	for CombiBox 3

### PE bar



Order no.      Version

10.06 80 03	for XX.01 22 15, lengthwise mounted
10.06 80 04	for XX.01 22 15, XX.01 24 15, crosswise mounted
10.06 80 05	for XX.01 24 15, XX.01 44 15, lengthwise mounted
10.06 80 06	for XX.01 44 15, crosswise mounted





# Polyester Ex CombiBox

## Technical details



Order no.	Product type	Dimensions H x W x D (mm)
06.01 22 15	CB 1 Exe	177 x 177 x 145
16.01 22 15	CB 1 Exi	177 x 177 x 145
26.01 22 15	CB 1 ExB	177 x 177 x 145

		1,5	2,5	4	6	10	16	25	35	50	70	95
		23	18	15	11	9	7	6	6			
		1	1	1	1	1	1	1	1			
x  A	6											
	10	68										
	16	23	45	175								
	20	9	26	51								
	25		12	29	55							
	35			8	21	54						
	50				3	17	44					
	63					6	20	73				
	80						8	23	82			
	100							10	21			
	125								8			
	160											
	200											
	225											
	250											
	315											
400												
500												

Maximum number of cable glands



M	Side	
	A/B	C/D
12	36	36
16	16	16
20	12	12
25	6	6
32	4	4
40	2	2
50	1	1
63	1	1
75		
85		

DIN rail	TS 35
Length (mm)	152
max. fitting length (mm)	115



Order no.	Product type	Dimensions H x W x D (mm)
06.01 24 15	CB 2 Exe	360 x 177 x 145
16.01 24 15	CB 2 Exi	360 x 177 x 145
26.01 24 15	CB 2 ExB	360 x 177 x 145

		1,5	2,5	4	6	10	16	25	35	50	70	95
		66	53	45	34	27	22	18	18			
		1	1	1	1	1	1	1	1			
x  A	6											
	10	72										
	16	25	48	187								
	20	10	28	54								
	25		13	30	59							
	35			9	23	57						
	50				3	18	47					
	63					6	22	78				
	80						8	24	88			
	100							10	23			
	125								9			
	160											
	200											
	225											
	250											
	315											
400												
500												

Maximum number of cable glands



M	Side	
	A/B	C/D
12	109	36
16	50	16
20	40	12
25	21	6
32	12	4
40	9	2
50	5	1
63	4	1
75		
85		

DIN rail	TS 35
Length (mm)	333
max. fitting length (mm)	285



# Polyester Ex CombiBox

## Technical details



Order no.	Product type	Dimensions H x W x D (mm)
06.01 44 15	CB 3 Exe	360 x 360 x 145
16.01 44 15	CB 3 Exi	360 x 360 x 145
26.01 44 15	CB 3 ExB	360 x 360 x 145

Maximum number of cable glands

M	Side	
	A/B	C/D
12	109	109
16	50	50
20	40	40
25	21	21
32	12	12
40	9	9
50	5	5
63	4	4
75		
85		

	1,5	2,5	4	6	10	16	25	35	50	70	95	
	264	212	135	102	81	44	36	36	28	11	11	
	4	4	3	3	3	2	2	2	1	1	1	
	6											
	10	94										
	16	32	62	243								
	20	13	36	70								
	25		17	40	77							
	35			11	30	74						
	50				4	24	62					
	63					8	28	102				
	80						11	32	114			
	100							13	30			
	125								12	30		
	160									10	27	
	200										9	23
	225										3	13
	250											7
	315											
400												
500												

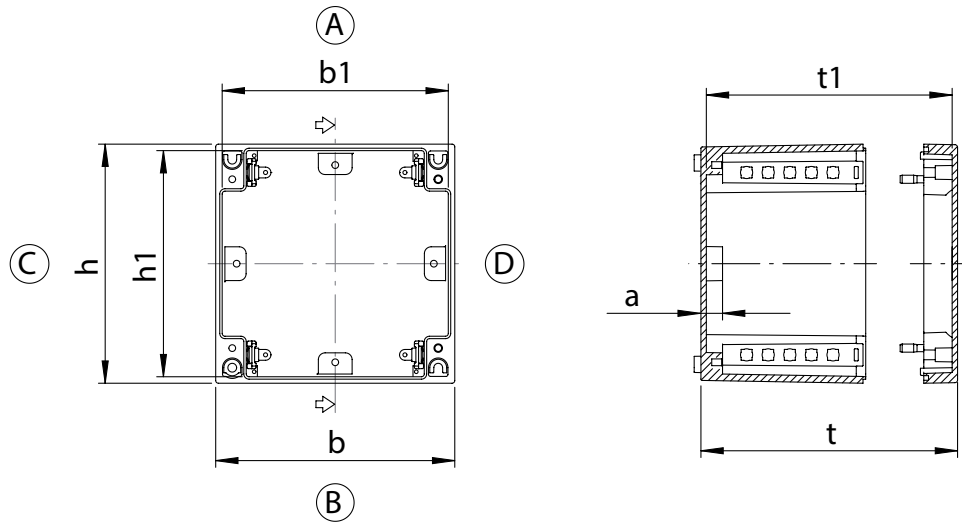
DIN rail	TS 35
Length (mm)	333
max. fitting length (mm)	285



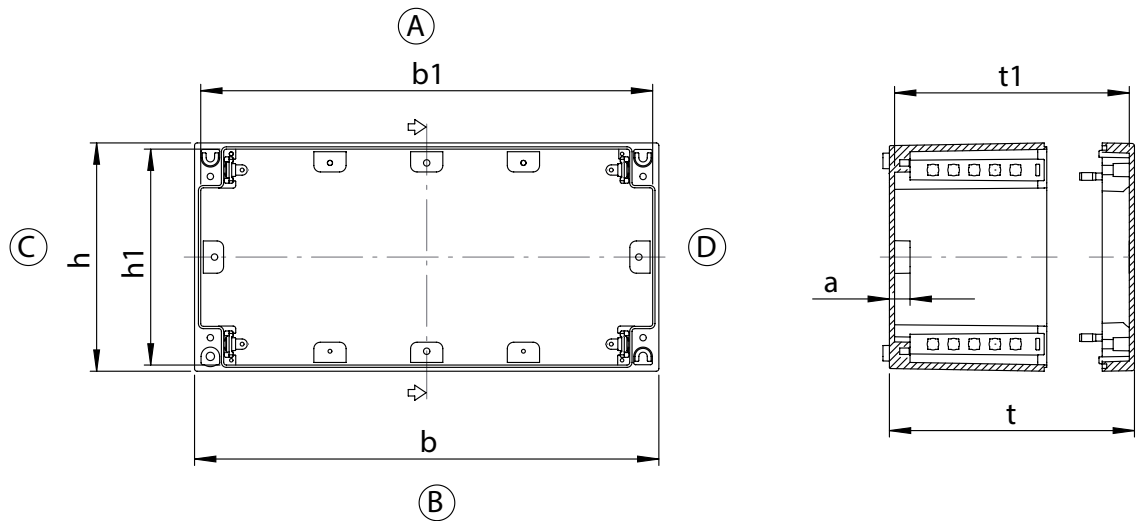
# Polyester Ex CombiBox

## Technical details

Order no.	b	h	t	b1	h1	t1	a
XX.01 22 15	177	177	145	169	169	137	16
XX.01 44 15	360	360	145	352	352	137	16



Order no.	b	h	t	b1	h1	t1	a
XX.01 24 15	360	177	145	352	169	137	16



For detailed drawings visit [www.rose-pw.de](http://www.rose-pw.de)



## Polyester Ex Flange



- + Glass fibre reinforced enclosure system of polyester resin for application in all Ex areas
- + Empty enclosure with U-approval for individual fittings and Ex eb / Ex ia junction boxes
- + Optional: Execution with window
- + Combination with other polyester flange enclosures possible

### Included in delivery

**Empty enclosure:** Enclosure system with blind flange and silicone lid seal, polyurethane seal  
**Junction box:** Enclosure system - depending on version either with silicone seal, continuity plate, DIN rails, internal earthing connection, terminals, manufacturing, cable glands

### Technical datas

<b>Explosion protection</b>	II 2 G Ex eb IIC T6/T5/T4 Gb II 2 G Ex ia IIC T6/T5/T4 Gb II 2 G Ex db eb ia [ia] mb IIC T6/T5/T4 Gb II 3 G Ex eb db mb ia [ia Ga] nA nC [op is] IIC T6, T5, T4 Gc II 2 D Ex tb IIIC T85 °C/T100 °C/T135 °C Db IP65
<b>Certificates</b>	PTB 00 ATEX 1002 IECEX PTB 08.0004 EAC RU C-DE.AA87.B.00637
<b>Material</b>	glass fibre reinforced duroplastic polyester, graphite added
<b>Colour</b>	RAL 9011, graphite black
<b>Ingress protection</b>	IP65 to EN 60529
<b>Impact resistance</b>	7 Joule to EN 60079-0
<b>Flammability</b>	self-extinguishing, UL 94 V-0
<b>Surface resistance</b>	<10 <sup>9</sup> Ohm to IEC 60093
<b>Toxicity</b>	halogen free
<b>Temperature range</b>	-55 °C to +135 °C
<b>Other execution on request</b>	EMC



# Polyester Ex Flange

## Product overview

Ex e	Ex Empty	Ex i	Dimensions H x W x D (mm)	Weight (g)			
Order no.	Product type	Order no.	Product type	Order no.	Product type		
06.14 01 00	PFEExe 0610	26.14 01 00	PFEExB 0610	16.14 01 00	PFEExi 0610	170 x 270 x 136	1690
06.14 02 00	PFEExe 0620	26.14 02 00	PFEExB 0620	16.14 02 00	PFEExi 0620	270 x 270 x 136	1900
06.14 03 00	PFEExe 0630	26.14 03 00	PFEExB 0630	16.14 03 00	PFEExi 0630	270 x 541 x 136	3350

## Terminal mounting

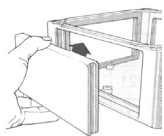
DIN rail	Phoenix Contact									
	TS 15	TS 15	TS 35	TS 35	TS 35	TS 35	TS 35	TS 35	TS 35	TS 35
Nominal cross section (mm <sup>2</sup> )	2,5	4	2,5	4	6	10	16	35	50	
Voltage (V)	352	352	690	690	690	690	690	690	690	
Terminal width (mm)	5,2	6,2	5,2	6,2	8,2	10,2	12,2	16,2	20	
Terminal type										
Enclosure type	MUT 2,5	MUT 4	UT 2,5	UT 4	UT 6	UT 10	UT 16	UT 35	UKH 50	PE bar 1,5 to 6 mm <sup>2</sup>
XX.14 01 00	42	35	42	35	26	21	18	13		20
XX.14 02 00	72	60	72	60	46	36	28	22		20
XX.14 03 00	176	148	176	148	112	90	74	56	50	48

Other suppliers on request

## Accessories

Order no.	DIN rails	Mounting plate
XX.14 01 00	•	•
XX.14 02 00	•	•
XX.14 03 00	•	•

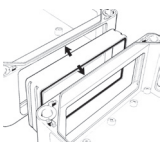
### Blind flange



Order no.      Version

06.14 00 20      for XX.14 01 00 - XX.14 03 00

### Connecting flange



Order no.      Version

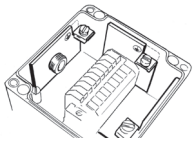
06.14 00 25      Connecting flange



## Polyester Ex Flange

### Accessories

#### Continuity plate



for side A/B

Order no.      Version

12.05 52 80	for XX.14 01 00
12.05 52 81	for XX.14 02 00
12.05 52 82	for XX.14 03 00

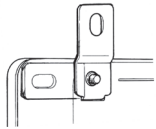
#### DIN rails



Order no.      Version

10.06 17 21	TS 35/7.5 for XX.14 01 00
10.06 17 22	TS 35/7.5 for XX.14 02 00
10.06 17 23	TS 35/7.5 for XX.14 03 00

#### External mounting brackets

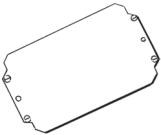


set = 4 pcs

Order no.      Version

10.03 11 02	for XX.14 01 00 - XX.14 03 00
-------------	-------------------------------

#### Mounting plate



Order no.      Version

14.00 00 11	for XX.14 01 00
14.00 00 12	for XX.14 02 00
14.00 00 13	for XX.14 03 00

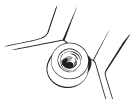
#### PE bar



Order no.      Version

12.05 42 80	for XX.14 01 00
12.05 42 81	for XX.14 02 00
12.05 42 82	for XX.14 03 00

#### Threaded insert



Set = 10 pcs

Order no.

10.03 50 02
-------------



# Polyester Ex Flange

## Technical details



Order no.	Product type	Dimensions H x W x D (mm)
06.14 01 00	PFExe 0610	170 x 270 x 136
16.14 01 00	PFExi 0610	170 x 270 x 136
26.14 01 00	PFExB 0610	170 x 270 x 136

		1,5	2,5	4	6	10	16	25	35	50	70	95
		54	44	37	28	22	18	15	15			
		1	1	1	1	1	1	1	1			
x  A	6											
	10	66										
	16	22	44	171								
	20	9	25	49								
	25		12	28	54							
	35			8	21	53						
	50				3	17	43					
	63					5	20	72				
	80						7	22	80			
	100							9	21			
	125								8			
	160											
	200											
	225											
	250											
	315											
	400											
500												

Maximum number of cable glands



M	Side	
	A/B	C/D
12	63	33
16	28	16
20	22	12
25	12	6
32	8	4
40	3	2
50	3	1
63	2	1
75		
85		

DIN rail	TS 35
Length (mm)	255
max. fitting length (mm)	220



Order no.	Product type	Dimensions H x W x D (mm)
06.14 02 00	PFExe 0620	270 x 270 x 136
16.14 02 00	PFExi 0620	270 x 270 x 136
26.14 02 00	PFExB 0620	270 x 270 x 136

		1,5	2,5	4	6	10	16	25	35	50	70	95
		108	88	74	56	44	36	30	30			
		2	2	2	2	2	2	2	2			
x  A	6											
	10	77										
	16	26	51	198								
	20	11	30	57								
	25		14	32	63							
	35			9	24	61						
	50				3	20	50					
	63					6	23	83				
	80						9	26	93			
	100							11	24			
	125								10			
	160											
	200											
	225											
	250											
	315											
	400											
500												

Maximum number of cable glands



M	Side	
	A/B	C/D
12	63	63
16	28	28
20	22	22
25	12	12
32	8	8
40	3	3
50	3	3
63	2	2
75		
85		

DIN rail	TS 35
Length (mm)	215
max. fitting length (mm)	190



# Polyester Ex Flange

## Technical details



Order no.	Product type	Dimensions H x W x D (mm)
06.14 03 00	PFEExe 0630	270 x 541 x 136
16.14 03 00	PFEExi 0630	270 x 541 x 136
26.14 03 00	PFEExB 0630	270 x 541 x 136

Maximum number of cable glands

M	Side	
	A/B	C/D
12	63	63
16	28	28
20	22	22
25	12	12
32	8	8
40	3	3
50	3	3
63	2	2
75		
85		

	1,5	2,5	4	6	10	16	25	35	50	70	95	
	238	192	160	122	98	82	64	64	50	40		
	2	2	2	2	2	2	2	2	2	2		
x A	6											
	10	85										
	16	29	56	220								
	20	12	33	64								
	25		15	36	69							
	35			10	27	67						
	50				4	22	56					
	63					7	26	92				
	80						10	29	103			
	100							12	27			
	125								11	27		
	160									9	24	
	200										8	
	225											3
	250											
	315											
	400											
500												

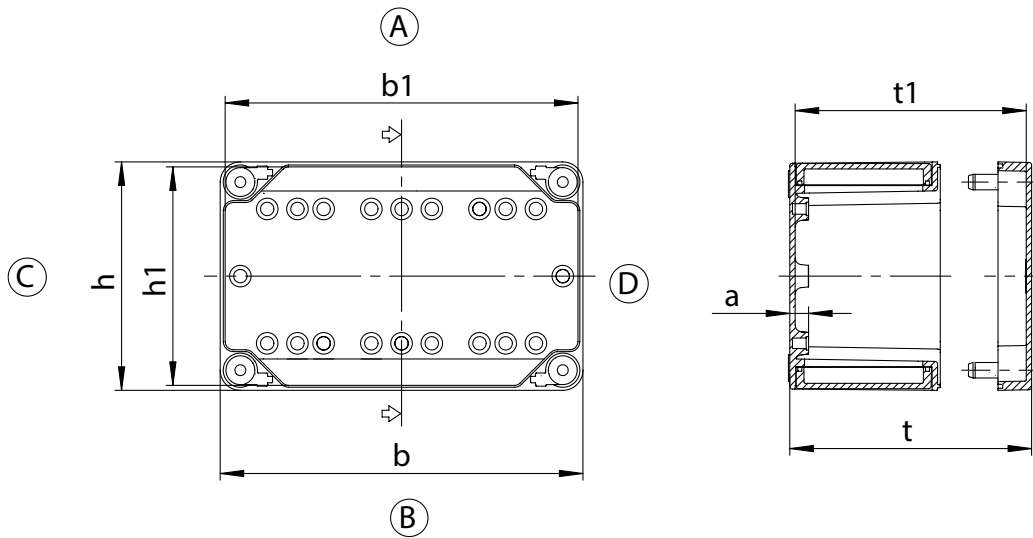
DIN rail	TS 35
Length (mm)	485
max. fitting length (mm)	460



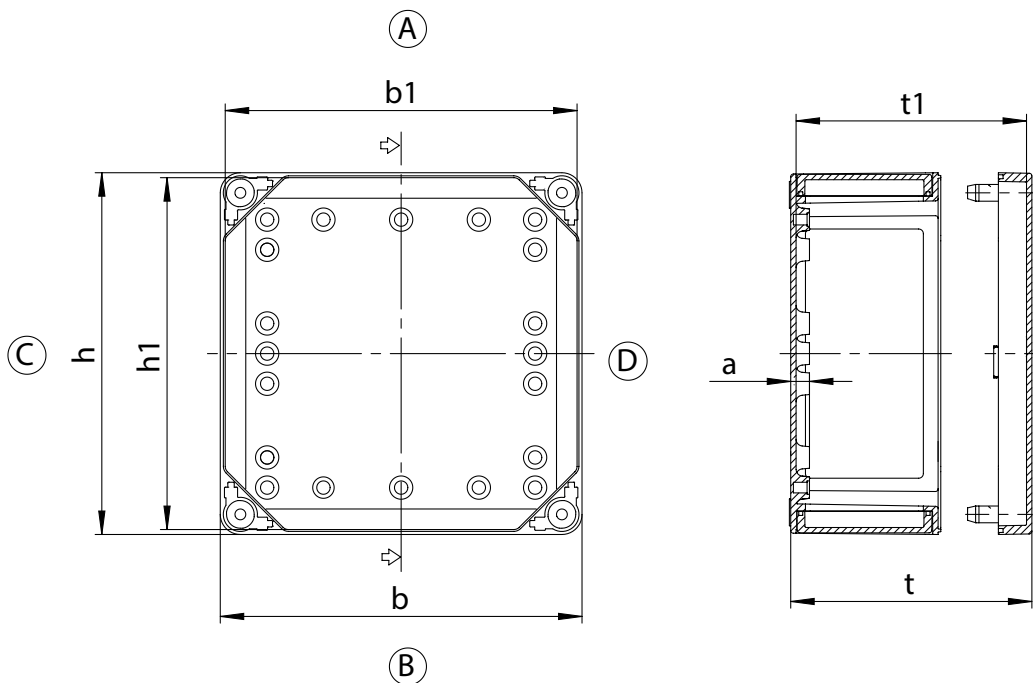
# Polyester Ex Flange

## Technical details

Order no.	b	h	t	b1	h1	t1	a
XX.14 01 00	270	170	136	257	157	127	14
XX.14 03 00	541	170	136	528	157	127	14



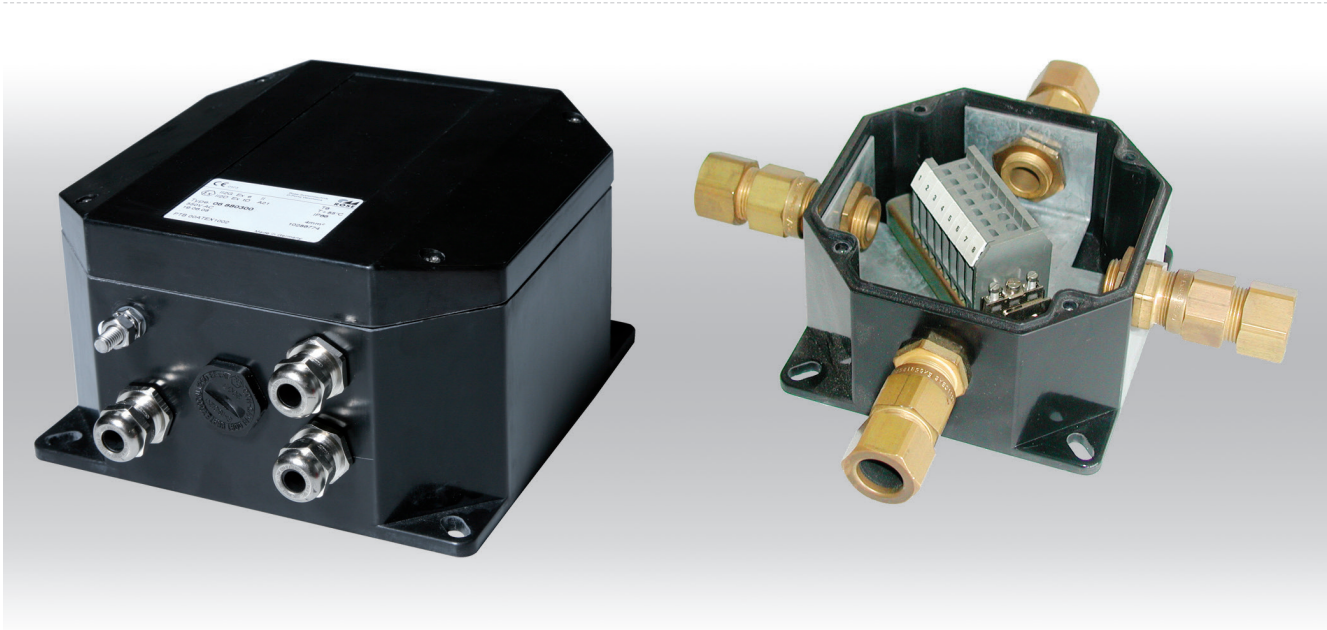
Order no.	b	h	t	b1	h1	t1	a
XX.14 02 00	270	270	136	257	257	127	14



For detailed drawings visit [www.rose-pw.de](http://www.rose-pw.de)



## Polyester Ex Okta Box



- + Glass fibre reinforced enclosure system of polyester-resin for use in all Ex-areas
- + Empty enclosures with U-approval for individual fittings and Ex eb / Ex ia terminal enclosures
- + enclosures with external brackets

### Included in delivery

Empty enclosure: Enclosure with silicone seal  
 Junction box: Enclosure system - depending on version either with silicone seal, continuity plate, DIN rails, internal earthing connection, terminals, manufacturing, cable glands

### Technical datas

<b>Explosion protection</b>	II 2 G Ex eb IIC T6/T5/T4 Gb II 2 G Ex ia IIC T6/T5/T4 Gb II 2 G Ex db eb ia [ia] mb IIC T6/T5/T4 Gb II 3 G Ex eb db mb ia [ia Ga] nA nC [op is] IIC T6, T5, T4 Gc II 2 D Ex tb IIIC T85 °C/T100 °C/T135 °C Db IP66
<b>Certificates</b>	PTB 00 ATEX 1002 IECEx PTB 08.0004 EAC RU C-DE.AA87.B.00637
<b>Material</b>	glass fibre reinforced duroplastic polyester, graphite added
<b>Colour</b>	RAL 9011, graphite black
<b>Ingress protection</b>	IP66 to EN 60529
<b>Impact resistance</b>	7 Joule to EN 60079-0
<b>Flammability</b>	self-extinguishing, UL 94 V-0
<b>Surface resistance</b>	<10 <sup>9</sup> Ohm to IEC 60093
<b>Toxicity</b>	halogen free
<b>Temperature range</b>	-55 °C to +135 °C
<b>Other execution on request</b>	EMC



# Polyester Ex Okta Box

## Product overview

Ex e		Ex Empty		Ex i		Dimensions H x W x D (mm)	Weight (g)
Order no.	Product type	Order no.	Product type	Order no.	Product type		
<b>06.88 01 00</b>	Okta Exe 0601	<b>26.88 01 00</b>	Okta ExB 2601	<b>16.88 01 00</b>	Okta Exi 1601	81 x 81 x 75	320
<b>06.88 02 00</b>	Okta Exe 0602	<b>26.88 02 00</b>	Okta ExB 2602	<b>16.88 02 00</b>	Okta Exi 1602	121 x 121 x 75	500
<b>06.88 03 00</b>	Okta Exe 0603	<b>26.88 03 00</b>	Okta ExB 2603	<b>16.88 03 00</b>	Okta Exi 1603	161 x 161 x 93	320
<b>06.88 04 00</b>	Okta Exe 0604	<b>26.88 04 00</b>	Okta ExB 2604	<b>16.88 04 00</b>	Okta Exi 1604	200 x 200 x 125	2100

## Terminal mounting

	Phoenix Contact													
	TS 15	TS 15	TS 35	TS 35	TS 35	TS 35	TS 35	TS 35	TS 35	TS 35				
DIN rail	TS 15	TS 15	TS 35	TS 35	TS 35	TS 35	TS 35	TS 35	TS 35	TS 35				
Nominal cross section (mm <sup>2</sup> )	2,5	4	2,5	4	6	10	16	35	50					
Voltage (V)	352	352	690	690	690	690	690	690	690					
Terminal width (mm)	5,2	6,2	5,2	6,2	8,2	10,2	12,2	16,2	20					
Terminal type														
Enclosure type	MUT 2,5	MUT 4	UT 2,5	UT 4	UT 6	UT 10	UT 16	UT 35	UKH 50					Sheath clamp (2 x 4 mm <sup>2</sup> each clamp)
<b>XX.88 01 00</b>														2
<b>XX.88 02 00</b>	13	11	13	11	8	7								2
<b>XX.88 03 00</b>	20	17	20	17	13	10	8							2
<b>XX.88 04 00</b>	28	23	28	23	18	14	12	9	7					2

Other suppliers on request





# Polyester Ex Okta Box

## Technical details



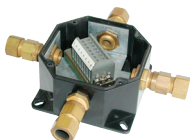
Order no.	Product type	Dimensions H x W x D (mm)
06.88 01 00	Okta Exe 0601	81 x 81 x 75
16.88 01 00	Okta Exi 1601	81 x 81 x 75
26.88 01 00	Okta ExB 2601	81 x 81 x 75

		1,5	2,5	4	6	10	16	25	35	50	70	95
		8	8									
		1	1									
x  A	6											
	10	32										
	16	11	21									
	20	4	12									
	25		5									
	35											
	50											
	63											
	80											
	100											
	125											
	160											
	200											
	225											
	250											
	315											
	400											
500												

Maximum number of cable glands

M	Side	
	A/B	C/D
12	3	3
16	1	1
20	1	1
25		
32		
40		
50		
63		
75		
85		

DIN rail	TS 15
Length (mm)	68



Order no.	Product type	Dimensions H x W x D (mm)
06.88 02 00	Okta Exe 0602	121 x 121 x 75
16.88 02 00	Okta Exi 1602	121 x 121 x 75
26.88 02 00	Okta ExB 2602	121 x 121 x 75

		1,5	2,5	4	6	10	16	25	35	50	70	95
		14	12	10	7	6						
		1	1	1	1	1						
x  A	6											
	10	36										
	16	12	24	93								
	20	5	14	27								
	25		6	15	29							
	35			4	11	28						
	50					9						
	63					3						
	80											
	100											
	125											
	160											
	200											
	225											
	250											
	315											
	400											
500												

Maximum number of cable glands

M	Side	
	A/B	C/D
12	8	8
16	3	3
20	2	2
25	1	1
32		
40		
50		
63		
75		
85		

DIN rail	TS 15/35
Length (mm)	101
max. fitting length (mm)	72



## Polyester Ex Okta Box

### Technical details



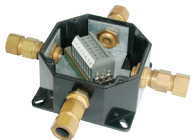
Order no.	Product type	Dimensions H x W x D (mm)
06.88 03 00	Okta Exe 0603	161 x 161 x 93
16.88 03 00	Okta Exi 1603	161 x 161 x 93
26.88 03 00	Okta ExB 2603	161 x 161 x 93

		1,5	2,5	4	6	10	16	25	35	50	70	95
		24	19	16	12	10	8					
		1	1	1	1	1	1					
	6											
	10	47										
	16	16	31	121								
	20	6	18	35								
	25		8	20	38							
	35			5	15	37						
	50				2	12	30					
	63					4	14					
	80						5					
	100											
	125											
	160											
	200											
	225											
	250											
	315											
400												
500												

Maximum number of cable glands

M	Side	
	A/B	C/D
12	15	15
16	8	8
20	5	5
25	2	2
32	2	2
40		
50		
63		
75		
85		

DIN rail	TS 15/35
Length (mm)	141
max. fitting length (mm)	107,5



Order no.	Product type	Dimensions H x W x D (mm)
06.88 04 00	Okta Exe 0604	200 x 200 x 125
16.88 04 00	Okta Exi 1604	200 x 200 x 125
26.88 04 00	Okta ExB 2604	200 x 200 x 125

		1,5	2,5	4	6	10	16	25	35	50	70	95
		111	90	75	57	30	24	10	10	7		
		1	1	1	1	1	1	1	1	1		
	6											
	10	64										
	16	22	42	165								
	20	9	25	48								
	25		11	27	52							
	35			8	20	51						
	50				3	16	42					
	63					5	19	69				
	80						7	21	77			
	100							9	20			
	125								8	20		
	160									7		
	200											
	225											
	250											
	315											
400												
500												

Maximum number of cable glands

M	Side	
	A/B	C/D
12	36	36
16	16	16
20	12	12
25	6	6
32	4	4
40	2	2
50	2	2
63	1	1
75		
85		

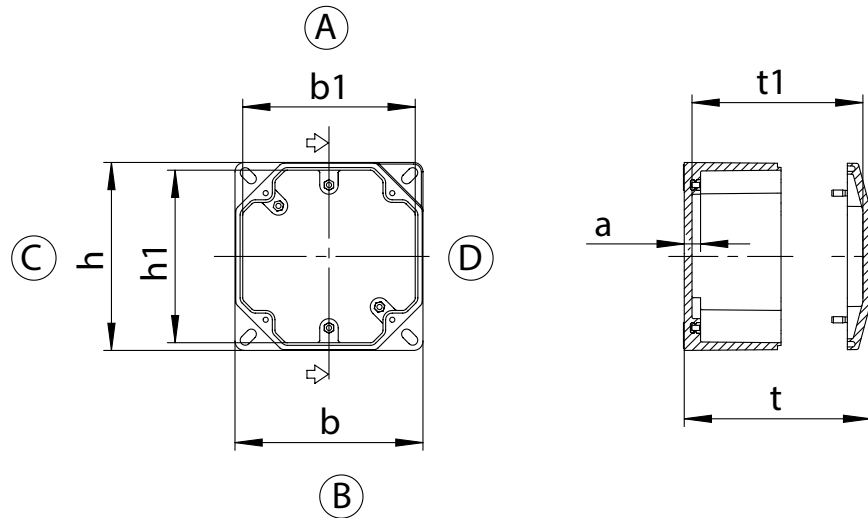
DIN rail	TS 35
Length (mm)	178
max. fitting length (mm)	148



# Polyester Ex Okta Box

## Technical details

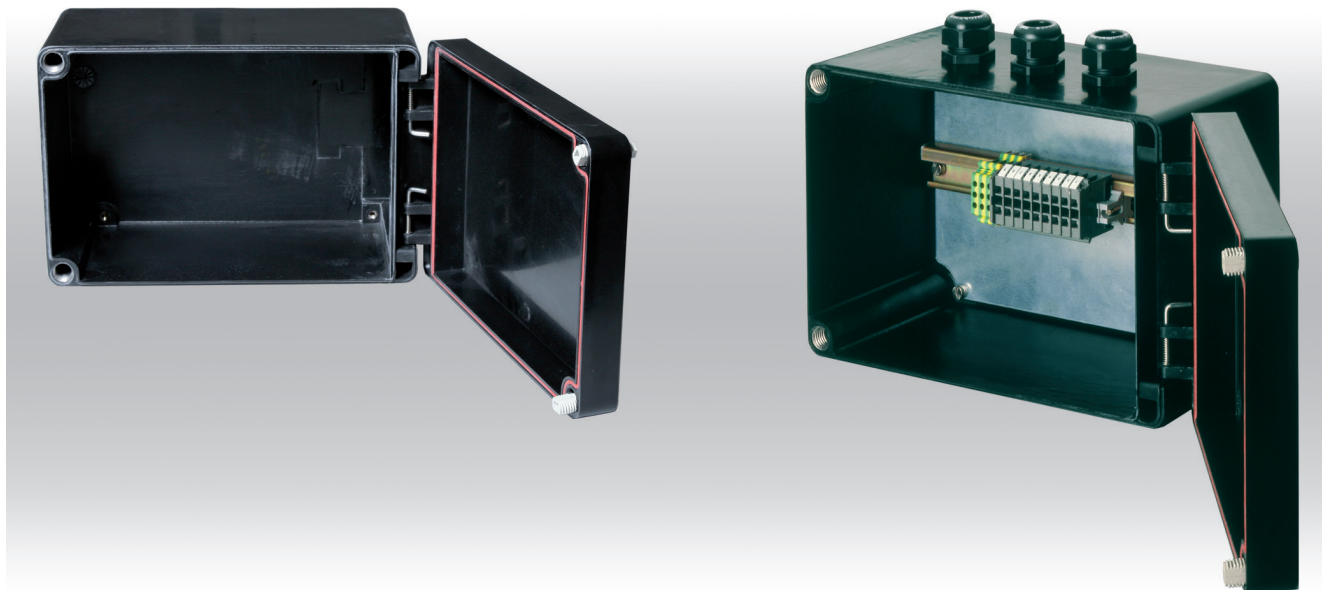
Order no.	b	h	t	b1	h1	t1	a
XX.88 01 00	81	81	75	71	71	65	10,5
XX.88 02 00	121	121	75	111	111	65	10,5
XX.88 03 00	161	161	93	151	151	83	10,5
XX.88 04 00	201	201	125	188	188	110	14,5



For detailed drawings visit [www.rose-pw.de](http://www.rose-pw.de)



## Polyester Ex cabinets Polyglas



- + Polyester Ex enclosure with hinged lid
- + Easy fitting of Ex components
- + Available as full assembled enclosure with terminals, cable glands and further Ex accessories or as empty enclosure with U-approval, component certified

### Included in delivery

Empty enclosure: Enclosure with silicone seal and square lock.

Junction box: Enclosure system - depending on version with silicone seal, continuity plate, with DIN rails, internal earthing connections, terminals, manufacturing, cable glands, square lock

### Technical datas

Explosion protection	II 2 G Ex eb IIC T6/T5/T4 Gb II 2 G Ex ia IIC T6/T5/T4 Gb II 2 G Ex db eb ia [ia] mb IIC T6/T5/T4 Gb II 3 G Ex eb db mb ia [ia Ga] nA nC [op is] IIC T6, T5, T4 Gc II 2 D Ex tb IIIC T85 °C/T100 °C/T135 °C Db IP66
Certificates	PTB 00 ATEX 1002 IECEX PTB 08.0004 EAC RU C-DE.AA87.B.00637
Material	glass fibre reinforced duroplastic polyester, graphite added
Colour	RAL 9011, graphite black
Ingress protection	IP66 to EN 60529
Impact resistance	7 Joule to EN 60079-0
Flammability	self-extinguishing, UL 94 V-0
Surface resistance	<10 <sup>9</sup> Ohm to IEC 60093
Toxicity	halogen free
Temperature range	-55 °C to +135 °C



# Polyester Ex cabinets Polyglas

## Product overview

Ex e		Ex Empty		Ex i		Dimensions H x W x D (mm)	Weight (g)
Order no.	Product type	Order no.	Product type	Order no.	Product type		
06.20 20 00	Pog Exe 1	26.20 20 00	Pog ExB 1	16.20 20 00	Pog Exi 1	200 x 200 x 168	1800
06.20 30 00	Pog Exe 2	26.20 30 00	Pog ExB 2	16.20 30 00	Pog Exi 2	200 x 300 x 168	2350
06.30 40 00	Pog Exe 3	26.30 40 00	Pog ExB 3	16.30 40 00	Pog Exi 3	405 x 305 x 202	4100
06.40 60 00	Pog Exe 4	26.40 60 00	Pog ExB 4	16.40 60 00	Pog Exi 4	605 x 405 x 252	7200

## Terminal mounting

DIN rail	Phoenix Contact													
	TS 15	TS 15	TS 35	TS 35	TS 35	TS 35	TS 35	TS 35	TS 35	TS 35	TS 35	TS 35		
Nominal cross section (mm <sup>2</sup> )	2,5	4	2,5	4	6	10	16	35	50	95	150	240		
Voltage (V)	352	352	690	690	690	690	690	690	690	880	1100	1100		
Terminal width (mm)	5,2	6,2	5,2	6,2	8,2	10,2	12,2	16,2	20	25	31	36		
Terminal type														
Enclosure type	MUT 2,5	MUT 4	UT 2,5	UT 4	UT 6	UT 10	UT 16	UT 35	UKH 50	UKH 95	UKH 150	UKH 240	Sheath clamp (2 x 4 mm <sup>2</sup> each clamp)	
XX.20 20 00	25	21	25	21	15	12	10	8					6	
XX.20 30 00	44	37	44	37	28	22	18	14	13				11	
XX.30 40 00	124	110	124	110	84	66	28	21	18	14	11		17	
XX.40 60 00	312	261	312	261	132	106	88	33	28	22	18	10	28	

Other suppliers on request

## Accessories

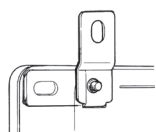
Order no.	External mounting brackets	Mounting plate
XX.20 20 00	•	•
XX.20 30 00	•	•
XX.30 40 00	•	•
XX.40 60 00	•	•



## Polyester Ex cabinets Polyglas

### Accessories

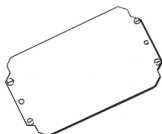
#### External mounting brackets



set = 4 pcs

Order no.	Version
10.03 10 08	for XX.20 20 00, XX.20 30 00
10.03 10 09	for XX.30 40 00, XX.40 60 00

#### Mounting plate



Order no.	Version
10.01 12 01	for XX.20 20 00
10.01 12 02	for XX.20 30 00
10.01 12 03	for XX.30 40 00
10.01 12 04	for XX.40 60 00

#### Socket wrench



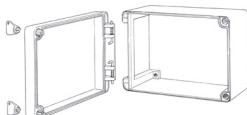
Order no.	Version
10.04 70 03	triangular 8mm
10.04 70 04	square 8mm
10.04 70 05	phillips screw
10.04 70 14	square 7mm
10.04 70 06	Daimler Benz
10.04 70 07	double ward 3mm

#### Turn bolt fastener



Order no.	Version
21.61 00 03	triangular lock 8mm
21.61 00 04	square lock 8 mm (2 pcs)
21.61 00 14	square lock 7 mm (2 pcs)
21.61 00 06	daimler benz lock (2 pcs)
21.61 00 07	double ward lock 3mm (2 pcs)
21.61 00 01	standard handle (2 pcs)
21.61 00 02	standard handle with lock (2pcs)

#### locking screws



Order no.	Version
21.63 00 03	triangular screw 8mm
21.63 00 04	square screw 8mm (2 pcs)
21.63 00 24	square screw 6mm (2 pcs)
21.63 00 05	phillips screw (2 pcs)

# Polyester Ex cabinets Polyglas

## Technical details



Order no.	Product type	Dimensions H x W x D (mm)
06.20 20 00	Pog Exe 1	200 x 200 x 168
16.20 20 00	Pog Exi 1	200 x 200 x 168
26.20 20 00	Pog ExB 1	200 x 200 x 168

		1,5	2,5	4	6	10	16	25	35	50	70	95
		35	28	24	18	14	12	9	9			
		1	1	1	1	1	1	1	1			
x  A	6											
	10	76										
	16	26	50	197								
	20	10	29	57								
	25		14	32	62							
	35			9	24	60						
	50				3	19	50					
	63					6	23	82				
	80						9	26	92			
	100							11	24			
	125								9			
	160											
	200											
	225											
	250											
	315											
	400											
500												

Maximum number of cable glands



M	Side	
	A/B	C/D
12	39	53
16	18	25
20	13	20
25	6	10
32	5	6
40	3	4
50	2	2
63	1	2
75		
85		

DIN rail	TS 35
Length (mm)	151
max. fitting length (mm)	131



Order no.	Product type	Dimensions H x W x D (mm)
06.20 30 00	Pog Exe 2	200 x 300 x 168
16.20 30 00	Pog Exi 2	200 x 300 x 168
26.20 30 00	Pog ExB 2	200 x 300 x 168

		1,5	2,5	4	6	10	16	25	35	50	70	95
		62	50	42	31	25	21	17	17	13		
		1	1	1	1	1	1	1	1	1		
x  A	6											
	10	80										
	16	27	53	208								
	20	11	31	60								
	25		14	34	65							
	35			10	25	64						
	50				3	21	53					
	63					7	24	87				
	80						9	27	97			
	100							11	25			
	125								10	26		
	160									9		
	200											
	225											
	250											
	315											
	400											
500												

Maximum number of cable glands



M	Side	
	A/B	C/D
12	77	53
16	38	25
20	28	20
25	15	10
32	9	6
40	6	4
50	4	2
63	3	2
75		
85		

DIN rail	TS 35
Length (mm)	251
max. fitting length (mm)	231



## Polyester Ex cabinets Polyglas

### Technical details



Order no.	Product type	Dimensions H x W x D (mm)
06.30 40 00	Pog Exe 3	405 x 305 x 202
16.30 40 00	Pog Exi 3	405 x 305 x 202
26.30 40 00	Pog ExB 3	405 x 305 x 202

		1,5	2,5	4	6	10	16	25	35	50	70	95	120	150
		172	140	116	88	70	29	24	24	18	14	14	11	11
		2	2	2	2	2	1	1	1	1	1	1	1	1
x A	6													
	10	105												
	16	36	70	272										
	20	15	41	79										
	25		19	45	86									
	35			13	34	84								
	50				5	27	69							
	63					9	32	114						
	80						12	36	128					
	100							15	34					
	125								13	34				
	160									11	30			
	200										10	26	80	
	225										4	15	31	
	250											8	19	40
	315												4	11
	400													
500														

Maximum number of cable glands

M	Side	
	A/B	C/D
12	106	144
16	48	65
20	40	54
25	21	30
32	12	17
40	8	12
50	5	7
63	4	5
75		
85		

DIN rail	TS 35
Length (mm)	365
max. fitting length (mm)	345



Order no.	Product type	Dimensions H x W x D (mm)
06.40 60 00	Pog Exe 4	605 x 405 x 252
16.40 60 00	Pog Exi 4	605 x 405 x 252
26.40 60 00	Pog ExB 4	605 x 405 x 252

		1,5	2,5	4	6	10	16	25	35	50	70	95	120	150	185	240
		402	324	273	136	110	92	37	37	28	22	22	18	18	10	10
		3	3	3	2	2	2	1	1	1	1	1	1	1	1	1
x A	6															
	10	138														
	16	47	91	356												
	20	19	53	103												
	25		25	58	112											
	35			17	44	109										
	50				6	35	90									
	63					12	42	149								
	80						16	47	167							
	100							20	44							
	125								2	18	44					
	160									15	39					
	200										14	34	105			
	225										5	19	41			
	250											10	25	52		
	315												5	15	31	
	400														7	21
500															3	

Maximum number of cable glands

M	Side	
	A/B	C/D
12	215	256
16	102	158
20	81	123
25	43	65
32	26	40
40	18	27
50	11	18
63	10	14
75		
85		

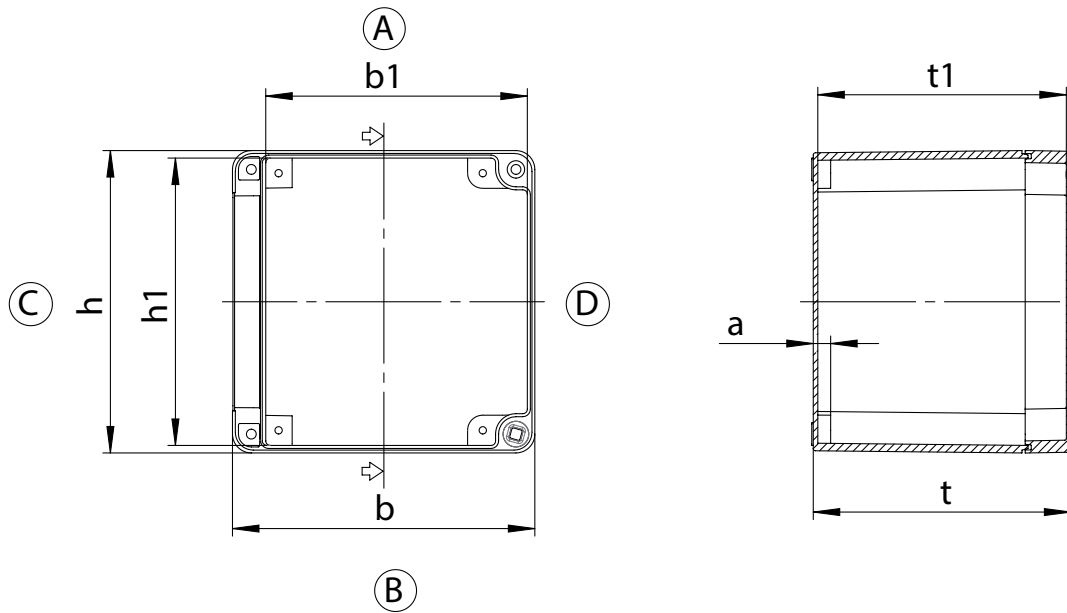
DIN rail	TS 35
Length (mm)	565
max. fitting length (mm)	545



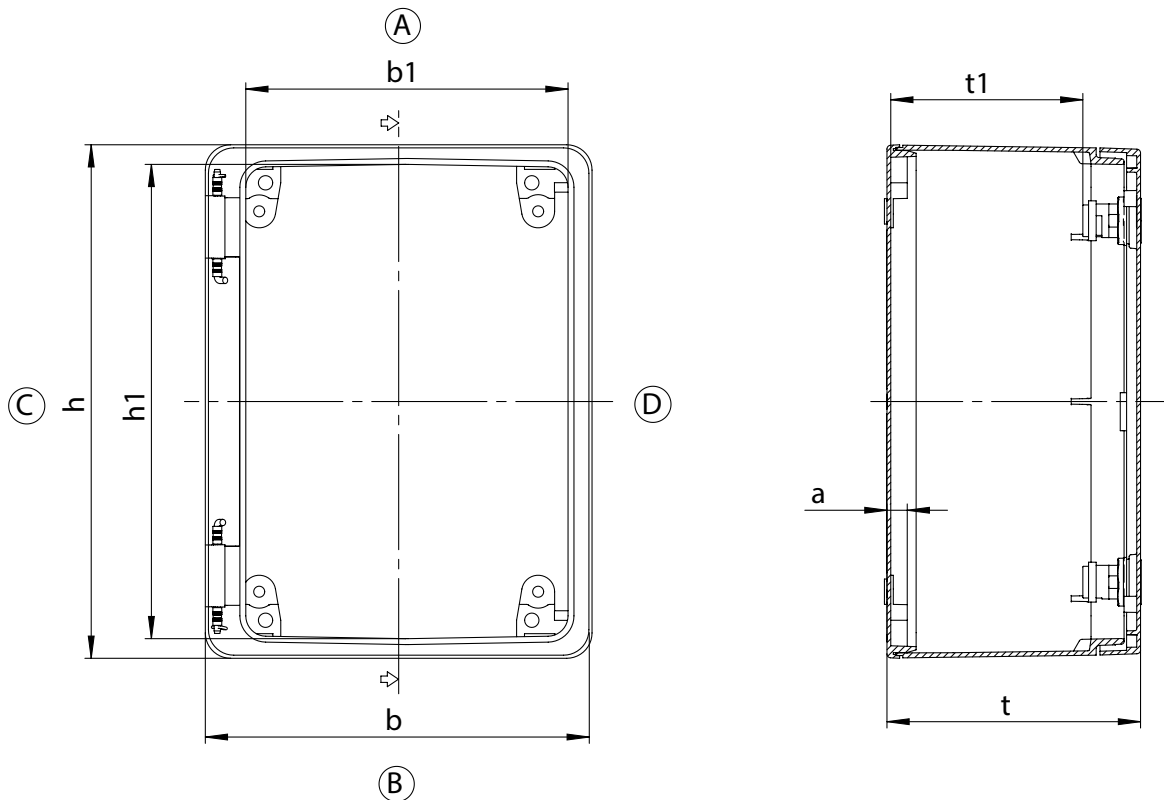
# Polyester Ex cabinets Polyglas

## Technical details

Order no.	b	h	t	b1	h1	t1	a
XX.20 20 00	200	200	168	173	190	162	8,5
XX.20 30 00	300	200	168	273	190	162	8,5



Order no.	b	h	t	b1	h1	t1	a
XX.30 40 00	305	400	202	254	374	132	16
XX.40 60 00	405	600	252	352	573	181	16



For detailed drawings visit [www.rose-pw.de](http://www.rose-pw.de)



## Polyester Ex enclosures for mining industry



- + Polyester enclosures with impact resistance of 20 Joule
- + Empty enclosures with U-approval for individual fittings
- + Silicone seal and allen lid screws

### Included in delivery

Empty enclosure: Enclosure system with silicone seal.

Junction box: Enclosure system - depending on version with silicone seal, DIN rails, internal earthing connection, terminals, continuity plate, manufacturing, cable glands.

### Technical datas

Explosion protection	I M2 Ex e I I M1 Ex ia I
Certificates	IBExU06ATEX1065U
Material	glass fibre reinforced duroplastic polyester, graphite added
Colour	RAL 9011, graphite black
Ingress protection	IP54 to EN 60529
Impact resistance	20 Joule to EN 60079-0
Flammability	self-extinguishing, UL 94 V-0
Surface resistance	<10 <sup>9</sup> Ohm to IEC 60093
Toxicity	halogen free
Temperature range	-55 °C to +100 °C
Other execution on request	EMC



# Polyester Ex enclosures for mining industry

## Product overview

Ex Empty		Dimensions H x W x D (mm)	Weight (g)
Order no.	Product type		
48.08 11 06	ExM 48010	75 x 110 x 56	295
48.08 16 06	ExM 48015	75 x 160 x 56	405
48.08 19 06	ExM 48020	75 x 190 x 56	450
48.12 12 09	ExM 48025	120 x 122 x 91	750
48.12 22 09	ExM 48030	120 x 220 x 91	1060
48.16 16 09	ExM 48035	160 x 160 x 91	1290
48.16 26 09	ExM 48040	160 x 260 x 91	1710
48.16 36 09	ExM 48045	160 x 360 x 91	2150
48.25 26 12	ExM 48050	250 x 255 x 121	2650
48.25 40 12	ExM 48055	250 x 400 x 121	3650
48.25 60 12	ExM 48060	250 x 600 x 121	5235

## Terminal mounting

	Phoenix Contact														Bartec		
	TS 15	TS 15	TS 35	TS 35	TS 35	TS 35	TS 35	TS 35	TS 35	TS 35	TS 35	TS 35					
DIN rail	TS 15	TS 15	TS 35	TS 35	TS 35	TS 35	TS 35	TS 35	TS 35	TS 35	TS 35	TS 35	TS 35				
Nominal cross section (mm <sup>2</sup> )	2,5	4	2,5	4	6	10	16	35	50	95	150	240					
Voltage (V)	352	352	690	690	690	690	690	690	690	880	1100	1100					
Terminal width (mm)	5,2	6,2	5,2	6,2	8,2	10,2	12,2	16,2	20	25	31	36					
Terminal type																	
Enclosure type	MUT 2,5	MUT 4	UT 2,5	UT 4	UT 6	UT 10	UT 16	UT 35	UKH 50	UKH 95	UKH 150	UKH 240	PE bar 1,5 to 6 mm <sup>2</sup>	Sheath clamp (2 x 4 mm <sup>2</sup> , 3 x 2,5 mm <sup>2</sup> each clamp)	Sheath clamp (2 x 6 mm <sup>2</sup> , 3 x 4 mm <sup>2</sup> , 4 x 2,5 mm <sup>2</sup> each clamp)	Ex Mini terminals	Ex Mini terminals blue
48.08 11 06	13	11												4			
48.08 11 08	13	11												4			
48.08 16 06	22	19												4			
48.08 19 06	28	23												4			
48.12 12 09	12	10	12	10	7	6	5								2		
48.12 22 09	32	26	32	26	20	16	13								4		
48.16 16 09	20	16	20	16	12	10	8	6					10				
48.16 26 09	39	33	39	33	25	20	16	12					22				
48.16 36 09	58	48	58	48	36	29	24	18					32				
48.25 26 12	74	62	74	62	48	19	16	12	9				22				
48.25 26 16	74	62	74	62	48	19	16	12	9	7			22				
48.25 40 12	130	110	130	110	82	33	28	21	17				38				
48.25 60 12	208	174	208	174	132	53	44	33	27				58				

Other suppliers on request



## Polyester Ex enclosures for mining industry

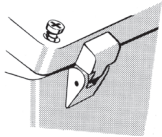
### Accessories

#### DIN rails



Order no.	Version
10.06 11 02	TS 15 for 48.08 11 06
10.06 10 08	TS 15 for 48.08 16 06
10.06 10 10	TS 15 for 48.08 19 06
10.06 14 21	TS 35/7.5 for 48.12 12 09
10.06 14 22	TS 35/7.5 for 48.12 22 09
10.06 14 23	TS 35/7.5 for 48.16 16 09
10.06 14 24	TS 35/7.5 for 48.16 26 09
10.06 14 25	TS 35/7.5 for 48.16 36 09
10.06 14 34	TS 35/7.5 for 48.25 26 12
10.06 14 27	TS 35/7.5 for 48.25 40 12
10.06 14 28	TS 35/7.5 for 48.25 60 12

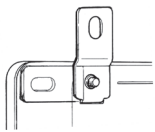
#### External hinges



Swivelling range 150°,  
 set = 2 pcs

Order no.	Version
10.02 70 01	for 48.12 12 09 - 48.25 60 12

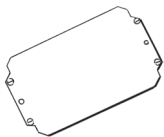
#### External mounting brackets



set = 4 pcs

Order no.	Version
10.03 11 01	for XX.08 08 06 - XX.10 20 08
10.03 11 02	for XX.12 12 08 - XX.31 60 18, XX.14 01 00 - XX.14 03 00

#### Mounting plate



Order no.	Version
10.01 11 03	for XX.08 11 06, XX.08 11 08
10.01 11 05	for XX.08 16 06, XX.08 16 08
10.01 11 07	for XX.08 19 06, XX.08 19 08
10.01 10 07	for XX.12 12 08, XX.12 12 09
10.01 10 08	for XX.12 22 08, XX.12 22 09
10.01 10 11	for XX.16 26 09
10.01 10 12	for XX.16 36 09
10.01 11 15	for XX.25 26 12, XX.25 26 16
10.01 11 16	for XX.25 40 12, XX.25 40 16
10.01 11 17	for XX.25 60 12

# Polyester Ex enclosures for mining industry

## Technical details



Order no. **48.08 11 06** Product type **ExM 48010** Dimensions H x W x D (mm) **75 x 110 x 56**

		1,5	2,5	4	6	10	16	25	35	50	70	95
		13	13									
		1	1									
	6											
	10	28										
	16	9	18									
	20	4	11									
	25		5									
	35											
	50											
	63											
	80											
	100											
	125											
	160											
	200											
	225											
	250											
	315											
	400											
500												

Maximum number of cable glands



M	Side	
	A/B	C/D
12	6	3
16	3	1
20	2	1
25	1	
32		
40		
50		
63		
75		
85		

DIN rail **TS 15**  
 Length (mm) **98**  
 max. fitting length (mm) **68,5**



Order no. **48.08 16 06** Product type **ExM 48015** Dimensions H x W x D (mm) **75 x 160 x 56**

		1,5	2,5	4	6	10	16	25	35	50	70	95
		23	23									
		1	1									
	6											
	10	28										
	16	9	19									
	20	4	11									
	25		5									
	35											
	50											
	63											
	80											
	100											
	125											
	160											
	200											
	225											
	250											
	315											
	400											
500												

Maximum number of cable glands



M	Side	
	A/B	C/D
12	12	3
16	5	1
20	4	1
25	3	
32		
40		
50		
63		
75		
85		

DIN rail **TS 15**  
 Length (mm) **148**  
 max. fitting length (mm) **118,5**



## Polyester Ex enclosures for mining industry

### Technical details



Order no.	Product type	Dimensions H x W x D (mm)
<b>48.08 19 06</b>	ExM 48020	75 x 190 x 56

		1,5	2,5	4	6	10	16	25	35	50	70	95
		28	28									
		1	1									
x 	6											
	10	28										
	16	9	19									
	20	4	11									
	25		5									
	35											
	50											
	63											
	80											
	100											
	125											
	160											
	200											
	225											
	250											
	315											
400												
500												

Maximum number of cable glands

M	Side	
	A/B	C/D
12	16	4
16	7	1
20	5	1
25	4	1
32		
40		
50		
63		
75		
85		

DIN rail	TS 15
Length (mm)	174
max. fitting length (mm)	148,5



Order no.	Product type	Dimensions H x W x D (mm)
<b>48.12 12 09</b>	ExM 48025	120 x 122 x 91

		1,5	2,5	4	6	10	16	25	35	50	70	95
		19	15	13	10	8	6					
		1	1	1	1	1	1					
x 	6											
	10	43										
	16	14	28	111								
	20	6	16	32								
	25		8	18	35							
	35			5	13	34						
	50				2	11	28					
	63					3	13					
	80						5					
	100											
	125											
	160											
	200											
	225											
	250											
	315											
400												
500												

Maximum number of cable glands

M	Side	
	A/B	C/D
12	12	12
16	5	5
20	4	4
25	2	2
32	1	1
40	1	1
50		
63		
75		
85		

DIN rail	TS 35
Length (mm)	107
max. fitting length (mm)	65



# Polyester Ex enclosures for mining industry

## Technical details



Order no. **48.12 22 09** Product type **ExM 48030** Dimensions H x W x D (mm) **120 x 220 x 91**

		1,5	2,5	4	6	10	16	25	35	50	70	95
		42	34	29	21	17	14					
		1	1	1	1	1	1					
x  A	6											
	10	46										
	16	15	30	119								
	20	6	18	34								
	25		8	19	37							
	35			5	14	36						
	50				2	12	30					
	63					4	14					
	80						5					
	100											
	125											
	160											
	200											
	225											
	250											
	315											
	400											
500												

Maximum number of cable glands



M	Side	
	A/B	C/D
12	32	12
16	14	5
20	12	4
25	6	2
32	3	1
40	2	1
50		
63		
75		
85		

DIN rail **TS 35**  
Length (mm) **205**  
max. fitting length (mm) **166,5**



Order no. **48.16 16 09** Product type **ExM 48035** Dimensions H x W x D (mm) **160 x 160 x 91**

		1,5	2,5	4	6	10	16	25	35	50	70	95
		28	23	19	14	11	9	7	7			
		1	1	1	1	1	1	1	1			
x  A	6											
	10	48										
	16	16	32	125								
	20	7	19	36								
	25		9	20	39							
	35			6	15	38						
	50				2	12	32					
	63					4	14	52				
	80						5	16	59			
	100							7	15			
	125								6			
	160											
	200											
	225											
	250											
	315											
	400											
500												

Maximum number of cable glands



M	Side	
	A/B	C/D
12	26	18
16	14	8
20	9	6
25	6	3
32	3	2
40	2	1
50	2	1
63		
75		
85		

DIN rail **TS 35**  
Length (mm) **144**  
max. fitting length (mm) **105**



## Polyester Ex enclosures for mining industry

### Technical details



Order no.	Product type	Dimensions H x W x D (mm)
<b>48.16 26 09</b>	ExM 48040	160 x 260 x 91

		1,5	2,5	4	6	10	16	25	35	50	70	95
		52	42	35	26	21	18	14	14			
		1	1	1	1	1	1	1	1			
x  A	6											
	10	52										
	16	18	35	136								
	20	7	20	39								
	25		9	22	43							
	35			6	16	41						
	50				2	13	34					
	63					4	16	57				
	80						6	17	64			
	100							7	16			
	125								6			
	160											
	200											
	225											
	250											
	315											
400												
500												

Maximum number of cable glands

M	Side	
	A/B	C/D
12	50	16
16	26	8
20	17	6
25	11	3
32	5	2
40	3	1
50	3	
63		
75		
85		

DIN rail	TS 35
Length (mm)	245
max. fitting length (mm)	205



Order no.	Product type	Dimensions H x W x D (mm)
<b>48.16 36 09</b>	ExM 48045	160 x 360 x 91

		1,5	2,5	4	6	10	16	25	35	50	70	95
		76	61	51	39	31	26	21	21			
		1	1	1	1	1	1	1	1			
x  A	6											
	10	53										
	16	18	35	138								
	20	7	20	40								
	25		9	22	43							
	35			6	17	42						
	50				2	14	35					
	63					4	16	58				
	80						6	18	65			
	100							7	17			
	125								7			
	160											
	200											
	225											
	250											
	315											
400												
500												

Maximum number of cable glands

M	Side	
	A/B	C/D
12	72	18
16	38	8
20	26	6
25	16	3
32	7	2
40	5	1
50	4	1
63		
75		
85		

DIN rail	TS 35
Length (mm)	343
max. fitting length (mm)	302



# Polyester Ex enclosures for mining industry

## Technical details



Order no. **48.25 26 12** Product type **ExM 48050** Dimensions H x W x D (mm) **250 x 255 x 121**

		1,5	2,5	4	6	10	16	25	35	50	70	95
		102	82	68	52	21	17	14	14	10		
		2	2	2	2	1	1	1	1	1		
x  A	6											
	10	70										
	16	24	47	182								
	20	10	27	52								
	25		13	30	57							
	35			8	22	56						
	50				3	18	46					
	63					6	21	76				
	80						8	24	85			
	100							10	22			
	125								9	22		
	160									7		
	200											
	225											
	250											
	315											
	400											
500												

Maximum number of cable glands



M	Side	
	A/B	C/D
12	69	51
16	32	24
20	24	18
25	12	10
32	8	7
40	4	3
50	3	3
63	3	2
75		
85		

DIN rail	TS 35
Length (mm)	238
max. fitting length (mm)	197



Order no. **48.25 40 12** Product type **ExM 48055** Dimensions H x W x D (mm) **250 x 400 x 121**

		1,5	2,5	4	6	10	16	25	35	50	70	95
		170	138	116	86	35	29	23	23	18		
		2	2	2	2	1	1	1	1	1		
x  A	6											
	10	76										
	16	26	50	197								
	20	10	29	57								
	25		14	32	62							
	35			9	24	60						
	50				3	19	50					
	63					6	23	82				
	80						9	26	92			
	100							11	24			
	125								9	24		
	160									8		
	200											
	225											
	250											
	315											
	400											
500												

Maximum number of cable glands



M	Side	
	A/B	C/D
12	117	50
16	56	22
20	42	18
25	21	10
32	14	6
40	7	3
50	5	2
63	5	2
75		
85		

DIN rail	TS 35
Length (mm)	381
max. fitting length (mm)	342



## Polyester Ex enclosures for mining industry

### Technical details



Order no.	Product type	Dimensions H x W x D (mm)
48.25 60 12	ExM 48060	250 x 600 x 121

Maximum number of cable glands



		1,5	2,5	4	6	10	16	25	35	50	70	95
		266	214	180	136	54	45	36	36	28		
		2	2	2	2	1	1	1	1	1		
x A	6											
	10	78										
	16	27	52	202								
	20	11	30	58								
	25		14	33	64							
	35			9	25	62						
	50				3	20	51					
	63					6	24	85				
	80						9	26	95			
	100							11	25			
	125								10	25		
	160									8		
	200											
	225											
	250											
	315											
400												
500												

M	Side	
	A/B	C/D
12	108	50
16	52	24
20	36	18
25	30	10
32	12	7
40	6	3
50	4	3
63	4	2
75		
85		

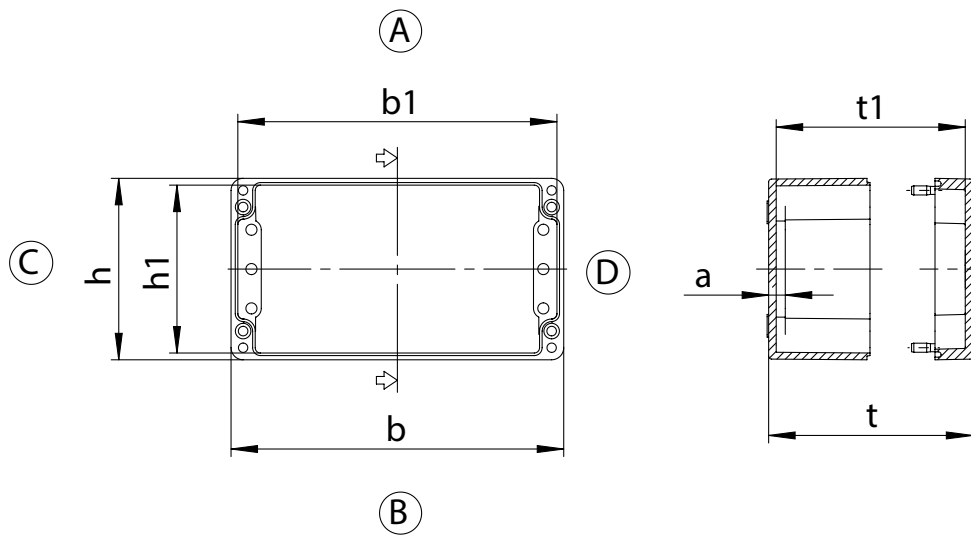
DIN rail	TS 35
Length (mm)	581
max. fitting length (mm)	542



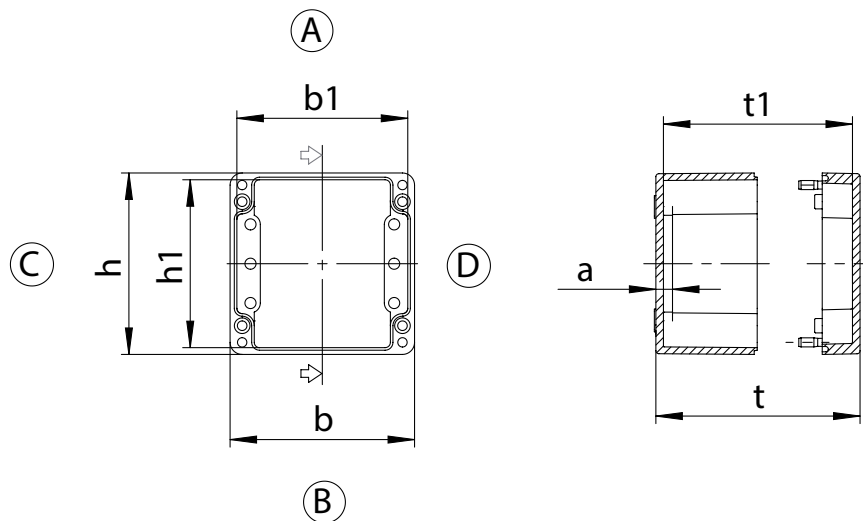
# Polyester Ex enclosures for mining industry

## Technical details

Order no.	b	h	t	b1	h1	t1	a
48.08 11 06	110	75	56,5	101	65	46	10,5
48.08 16 06	160	75	56,5	151	65	46	10,5
48.08 19 06	190	75	56,5	181	65	46	10,5
48.12 22 09	220	120	91	211	111	80	11
48.16 26 09	260	160	91	248	148	79	11,5
48.16 36 09	360	160	91	348	148	79	11,5
48.25 26 12	255	250	121	243	238	109	11,5
48.25 40 12	400	250	121	388	238	109	11,5
48.25 60 12	600	250	121	588	238	109	11,5



Order no.	b	h	t	b1	h1	t1	a
48.12 12 09	122	120	91	113	111	80	11
48.16 16 09	160	160	91	148	148	79	11,5



For detailed drawings visit [www.rose-pw.de](http://www.rose-pw.de)

