

Consumer Unit

BS EN60439-3

IP40



Applications



Standard

BS EN 60439-3

Marking



Performance

Voltage	240V 50Hz
Rating main switch	100A/63A
Rating RCCB	63A, 80A & 100A
IP rating	IP40
Poles	1P+N
Terminal capacity	25mm ² + 16mm ²

Dimensions Insulated

Dimension code	Height	Width	Depth
A (4 module)	245	198	120
B (10 module)	245	306	120
C (14 module)	245	378	120
D (18 module)	245	468	120

Dimensions Metal

Dimension code	Height	Width	Depth
A (4 module)	175	112	90
B (10 module)	208	218	108
C (14 module)	208	292	108
D (18 module)	208	370	108

Insulated main switch up to 100A



MCB ways	Rating (A)	HxWxD code	Cat. No.	Ref. No.	Pack.
1 ⁽¹⁾	63A	A	MS1	662100	1
2 ⁽¹⁾	63A	A	MS2	662101	1
4	100A	B	MS4	662102	1
6	100A	B	MS6	662103	1
8	100A	B	MS8	662104	1
11	100A	C	MS11	662105	1
16	100A	D	MS16	662106	1

Insulated RCCB main switch up to 80A



MCB ways	Rating (A)	Sensitivity (mA)	HxWxD code	Cat. No.	Ref. No.	Pack.
1 ⁽²⁾	63A	30mA	A	RM1	662108	1
2 ⁽²⁾	63A	30mA	A	RM2	662109	1
4	80A	30mA	B	RM4	662110	1
6	80A	30mA	B	RM6	662111	1
8	80A	30mA	B	RM8	662112	1
11	80A	30mA	C	RM11	662113	1
13	80A	30mA	D	RM14SPD	662115	1
16	80A	30mA	D	RM16	662114	1

Insulated split load 100A main switch & 80A 30mA RCCB



MCB ways	Split		HxWxD code	Cat. No.	Ref. No.	Pack.
	Iso	RCCB				
<i>Pre-configured</i>						
6	3	3	B	SL33	662119	1
10	5	5	C	SL55	662120	1
10	6	4	C	SL64	662121	1
12	6	6	D	SL66	662122	1
14	7	7	D	SL77	662123	1
<i>Flexible busbar</i>						
10	3/7	7/3	D	FSL10	662125	1
14	5/9	9/5	D	FSL14	662126	1

Insulated time delayed RCCB split load - 100A 100mA TD RCCB & 80A 30mA RCCB



MCB ways	Split		HxWxD code	Cat. No.	Ref. No.	Pack.
	Iso	RCCB				
10	5	5	C	SLTD55	662129	1

(1) Main switch rated at 63A
 (2) RCD main switch rated at 63A

A

B

C

D

E

F

G

X

Insulated split load 100A main switch & Dual 80A 30mA RCCB



No. of ways	Split			HxWxD code*	Cat. No.	Ref. No.	Pack.
	Iso	RCCB	RCCB				
Pre-configured							
6	2	2	2	C	TSL222	662152	1
10	3	4	5	D	TSL345	662153	1
10	4	4	2	D	TSL442	662154	1
12	2	5	5	D	TSL255	662155	1
12	4	5	5	D	TSL444	662156	1
Flexible busbar							
12	3/4/5	5/4/3		D	FTSL12	662161	1

Insulated split load 100A main switch & 80A 30mA RCCB



No. of ways	Split		HxWxD code*	Cat. No.	Ref. No.	Pack.
	RCCB	RCCB				
Pre-configured						
10	4	4	C	DSL44	662157	1
10	6	4	D	DSL64	662158	1
10	5	5	D	DSL55	662159	1
12	6	6	D	DSL66	662160	1
Flexible busbar						
12	5/7	7/5	D	DFSL12	662163	1

Garage & Shower



Description	RCCB Rating (A)	HxWxD code	Cat. No.	Ref. No.	Pack.
Garage unit 16A+6A	40A	A	GA40	662116	1
Shower unit 40A MCB	63A	A	SH40	662117	1
Shower unit 50A MCB	63A	A	SH50	662118	1



Metal main switch up to 100A



MCB ways	Rating (A)	HxWxD code	Cat. No.	Ref. No.	Pack.
2 ⁽¹⁾	63A	A	VCM2	618401	1
4	100A	B	VCM4	618402	1
6	100A	B	VCM6	618403	1
9	100A	C	VCM9	618404	1
13	100A	D	VCM13	618405	1

Metal RCCB main switch up to 80A



MCB ways	Rating (A)	Sensitivity (mA)	HxWxD code	Cat. No.	Ref. No.	Pack.
2 ⁽²⁾	63A	30mA	A	VCMA2	618406	1
4	80A	30mA	B	VCMA4	618407	1
6	80A	30mA	B	VCMA6	618409	1
9	80A	30mA	C	VCMA9	618411	1
13	80A	30mA	D	VCMA13	618413	1

Metal split load 100A main switch & 80A 30mA RCCB



MCB ways	Split		HxWxD code	Cat. No.	Ref. No.	Pack.
	Iso	RCCB				
<i>Pre-configured</i>						
6	3	3	C	VCM3A3	618416	1
8	4	4	D	VCM4A4	618419	1
10	5	5	D	VCM5A5	618423	1
14	7	7	D	VCM7A7	618489	1

Metal time delayed RCCB split load 100A 100mA TD RCCB & 80A 30mA RCCB

MCB ways	Split		HxWxD code	Cat. No.	Ref. No.	Pack.
	Iso	RCCB				
10	5	5	D	VCMBD5A5	618101	1

Flush mounting kit for metal consumer units



MCB ways	HxWxD code	Cat. No.	Ref. No.	Pack.
10	A	FMP10	618485	1
14	B	FMP14	618486	1
18	B	FMP18	618487	1

(1) Main switch rated at 63A
 (2) RCD main switch rated at 63A

NOTES:
 a) Metal consumer unit also required.
 b) Flush frame supplied separately for fitting by the installer.
 c) Image shows frame and consumer unit assembled
 d) To select the correct frame, match the frame and consumer unit dimension code.

A

B

C

D

E

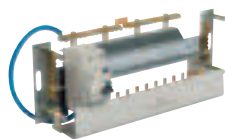
F

G

X



Skeleton consumer units



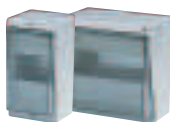
MCB ways	Type	Cat. No.	Ref. No.	Pack.
12	100A main switch	MVISO12	618607	1
12	80A 30mA RCCB	MVRCD12	618617	1
10	Split Load 100A MS & 80A 30mA	MVSL10	618649	1

Fix-o-Rail Cover – IP30 insulated enclosure



Modules	Cat. No.	Ref. No.	Pack.
2	E2	610090	1
4	E4	610091	1

Fix-o-Rail Junior – IP40 insulated enclosure



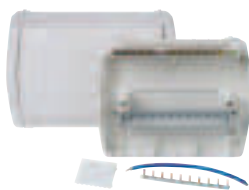
Modules	Cat. No.	Ref. No.	Pack.
4	EC4E+N	610151	1
8	EC8E+N	610345	1

Fix-o-Rail Metal – IP30 metal enclosure



Modules	Cat. No.	Ref. No.	Pack.
4	FOR4	618910	1

Insulated design enclosures



Modules	Busbar ways	HxWxD code	Cat. No.	Ref. No.	Pack.
4	3	A	CU4BN	662131	1
10	9	B	CU10BN	662132	1
14	13	C	CU14BN	662133	1
18	17	D	CU18BN	662134	1

Insulated enclosures supplied with busbar and neutral link cable

Metal design enclosures



Modules	HxWxD code	Cat. No.	Ref. No.	Pack.
10	B	EDU10E+N	618791	1
14	C	EDU14E+N	618792	1
18	D	EDU18E+N	618793	1

Half DIN rail adaptor (metal consumer units only)

Description	Modules	Cat. No.	Ref. No.	Pack
Half DIN rail adaptor	2	HDIN2	618794	1
Half DIN rail adaptor	3	HDIN3	618795	1
Half DIN rail adaptor	4	HDIN4	618796	1
Half DIN rail adaptor	6	HDIN6	618797	1

Blanks, shrouds & locks



Description	Modules	Cat. No.	Ref. No.	Pack
Cover blanking plate	4	BLANK4	610382	4
Busbar shroud	3	SHR3	619018	10
Consumer unit door lock	-	CKEY	662137	1
Device padlock bracket	-	KS	624929	2

Transparent consumer unit doors



Description	Modules	Cat. No.	Ref. No.	Pack.
Transparent door	4	CD4	662139	1
Transparent door	10	CD10	662140	1
Transparent door	14	CD14	662141	1
Transparent door	18	CD18	662142	1

Connection cables & linking pins



Description	Cat. No.	Ref. No.	Pack.
Split load cable kit 10/14 modules	CSLKIT14	662136	1
Split load cable kit 18 modules	CSLKIT18	662138	1
Live link cable	LLINK1	409000	1
Neutral link cable	NLINK1	594009	1
Consumer unit linking pins	CULINKPIN	662144	10

A

B

C

D

E

F

G

X