



Insulated enclosures Surface mounting

Fix-o-Rail Classic

IP30 / IP40

Approvals / Marking



Standards


BS EN 60439-3

Applications



Fix-o-Rail Classic and the accessories are a homogeneous system for power distribution in new homes, adding add-on devices and replacing old units.

Features

- Protection degree: IP30
- IP40 with door (optional)
- Colour: RAL 9010
- 13, 26, 39 and 52 modules
- Total insulation  (with backplate and door)
- Transparent or plain door
- Surface mounting
- Adjustable DIN-rail
- ABS for the covers
- Polycarbonate for the transparent doors
- Flame resistance: self extinguishing material, resist the glowwire 650°C

Components

The Fix-o-Rail Classic A packaging includes:

- A mounting frame
- A protective cover
- A backplate
- A support with earth and neutral terminals
- A modular blank plate
- Four insulating caps
- Labels for circuit identification
- Installation guidelines

The Fix-o-Rail Classic B packaging includes:

- A mounting frame
- A protective cover
- Labels for circuit identification
- Installation guidelines

Advantages

- Two DIN-rail positions: 47 and 55 mm
- Generous wiring room 30 mm behind the mounting frame
- 13 modules on each row
- 125 mm distance between two DIN-rails
- Self positioning protective cover, fixation with four captive quarter-turn screws
- Door can be opened to the left or the right and hinges over 180°
- The Classic range can be coupled

Accessories Fix-o-Rail Classic (continued)



Shrouding for earth and neutral support
Protects against direct contact with live parts

618531 1

Cable entry

For a perfect finish
Can be fixed on the top as well as on the bottom of the mounting frame

619084 1

Knockouts: 11 x PG 13.5 + 1 x PG 21/29



Metal support for connection terminals

618524 1

Blank plate 4 modules

610382 4

Length: 72 mm
Cut out width : 45 mm
Can be cut into 9 mm length
RAL 9010



Connection terminals

610185 4

Phase terminal 6 x 10 mm² + 2 x 16 mm²

610186 4

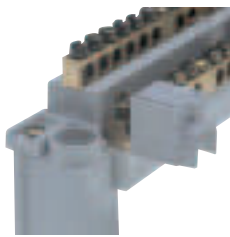
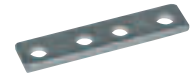
Earth terminal 6 x 10 mm² + 2 x 16 mm²

610187 4

Neutral terminal 6 x 10 mm² + 2 x 16 mm²

Coupling

618528 2



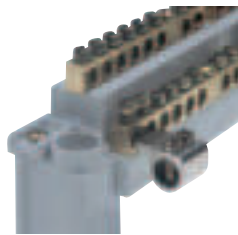
Cable connector clamp

624864 30

Axial 25 mm² insulated pin type

Sealing bracket

618527 2



Cable connector clamp

624862 50

Lateral 35 mm² non-insulated pin type

